



 **PBM VALVE SOLUTIONS**

for Nuclear Applications

- 2-Way Manual & Automated Valve Assemblies
- 3-Way Valve Assemblies
- Instrument and Gauge Isolation to ANSI Class 2500
- Tank Outlet and Zero Deadleg Valves
- Engineered Valve and Control Jumper Assemblies to Meet Your Most Stringent Application Needs





PBM VALVE SOLUTIONS

NQA-1 Nuclear Quality Assurance Level 1

PBM has over 30 years of experience designing, manufacturing and testing valves for handling high and low level nuclear waste transfer, storage and processing operations. Valves are thoughtfully designed, specified, manufactured and tested to meet strict engineering and government requirements ensuring that valves conform to the critical demands for the severe services associated with nuclear applications.

APPLICATIONS

- Radioactive Waste Transfer & Isolation
- Slurry and Solids Transfer
- Flush style tank outlets
- Evaporation and dewatering
- Instrument Isolation
- Inert and Reactive Gases
- Cryogenic
- Vacuum, Vent/Drain Applications

TESTING

- Seismic and Environmental Testing
- Positive Material Identification (PMI)
- Dye Penetrant
- Radiography
- Hydrostatic Testing
- Helium Leak Testing
- Non-Destructive and Destructive Testing

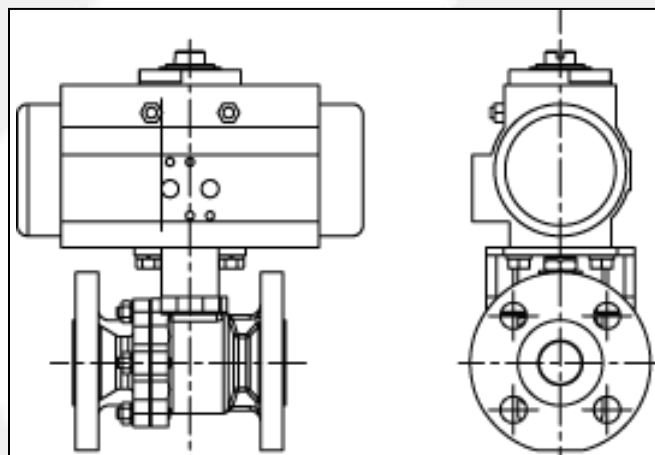
ALLOY AVAILABILITY

- Stainless Steel
- Carbon Steel
- Duplex Stainless
- Titanium
- Hastelloy
- Bronze and Aluminum Bronze
- Copper Nickel
- Inconel® and others

All alloys available as cast, forged, or bar stock material



2-way Automated Valve Assembly



Challenging NQA-1 applications, environments and stringent requirements call for design creativity, attention to detail and experience in order to become safe, robust and reliable designs.

PRODUCT LINES

INSTRUMENT

1/2" - 1" size

Instrument and gauge isolation to ANSI Class 2500. Double block & Bleed to ANSI Class 1500 and sizes 1/2 through 3 inch.



2-WAY MANUAL AND AUTOMATED

1/2" - 6" full port

Isolation and flow control Pressure to ANSI Class 300



TANK BOTTOM MANUAL AND AUTOMATED

1/2" - 6" full port

Isolation and flow control Pressure to ANSI Class 300



3-WAY VALVES MANUAL AND AUTOMATED

1/2" - 6" full port

3,4 and 5-way valves Transfer diverter and multi-port valves. All alloys and end fitting options



CUSTOM FABRICATED VALVE MANIFOLDS

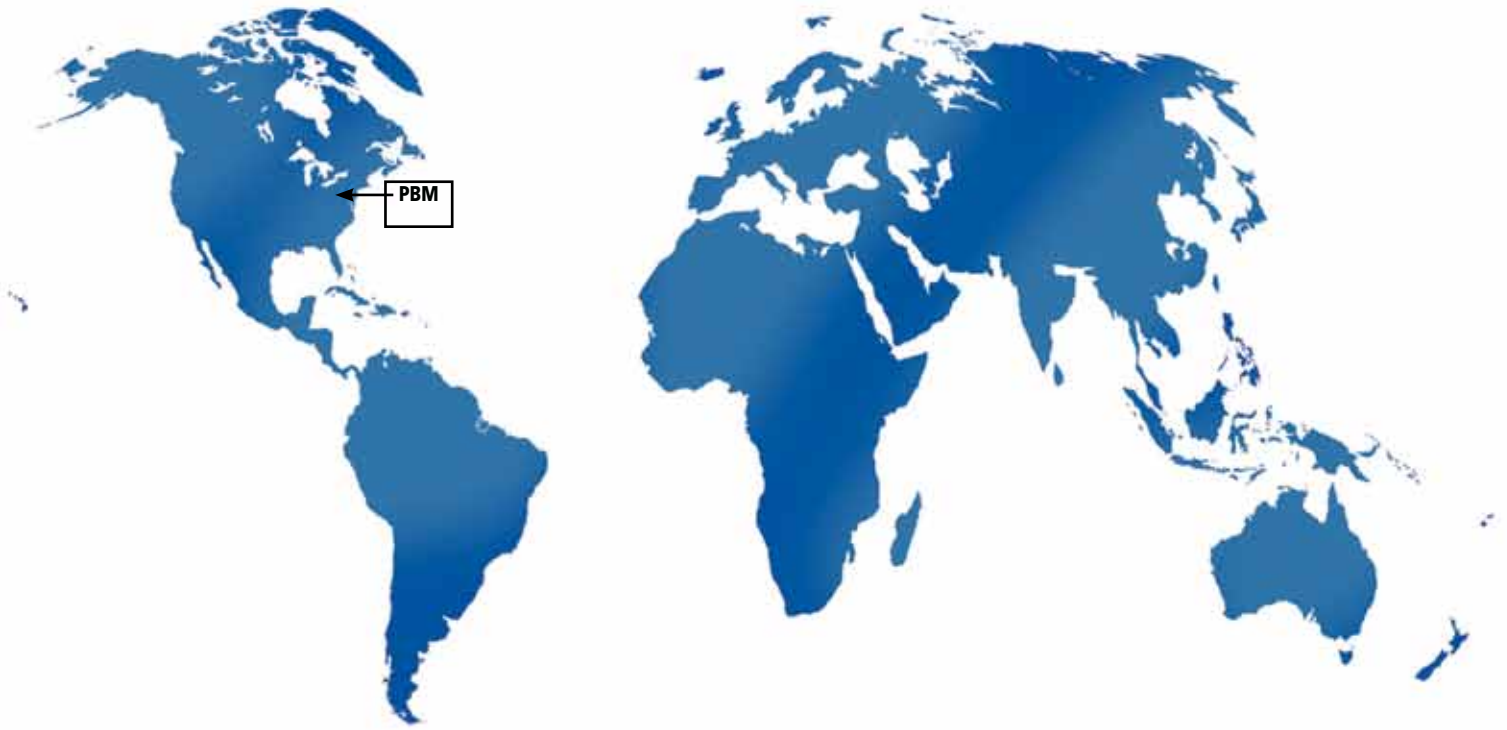
Valve manifolds and space-saving pipe and valve configurations designed to accommodate special applications



PBM's NQA-1 Quality Assurance Program meets or exceed the following:

- Title 10, U.S. Code of Federal Regulations, Appendix B to Part 50 (10 CRF 50 Appendix B).
- American Society of Mechanical Engineers (ASME) NQA-1-1994 (95 addenda), NQA-1-2004 (2005, 2007 addenda), NQA-1-2008 (2009, 2011 addenda) and NQA-1-2012.





WORLDWIDE REPRESENTATION

- United States • Canada • Australia • Mexico • Brazil • Argentina • Chile • UAE • United Kingdom
- Germany • Sweden • Spain • Belgium • France • Ireland • Switzerland • Austria • The Netherlands
- Central Europe • South Africa • India • Taiwan • China • Thailand • Singapore • Saudi Arabia • Malaysia

www.PBMvalve.com

Visit PBM Valve Solutions online to find the PBM domestic or international representative near you.



PBM, Inc. • 1070 Sandy Hill Road, Irwin, PA 15642
Phone: 800.967.4PBM • 724.863.0550 • Fax: 724.864.9255
E-mail: info@pbmvalve.com

