



APPLICATION BRIEF - 115/0517

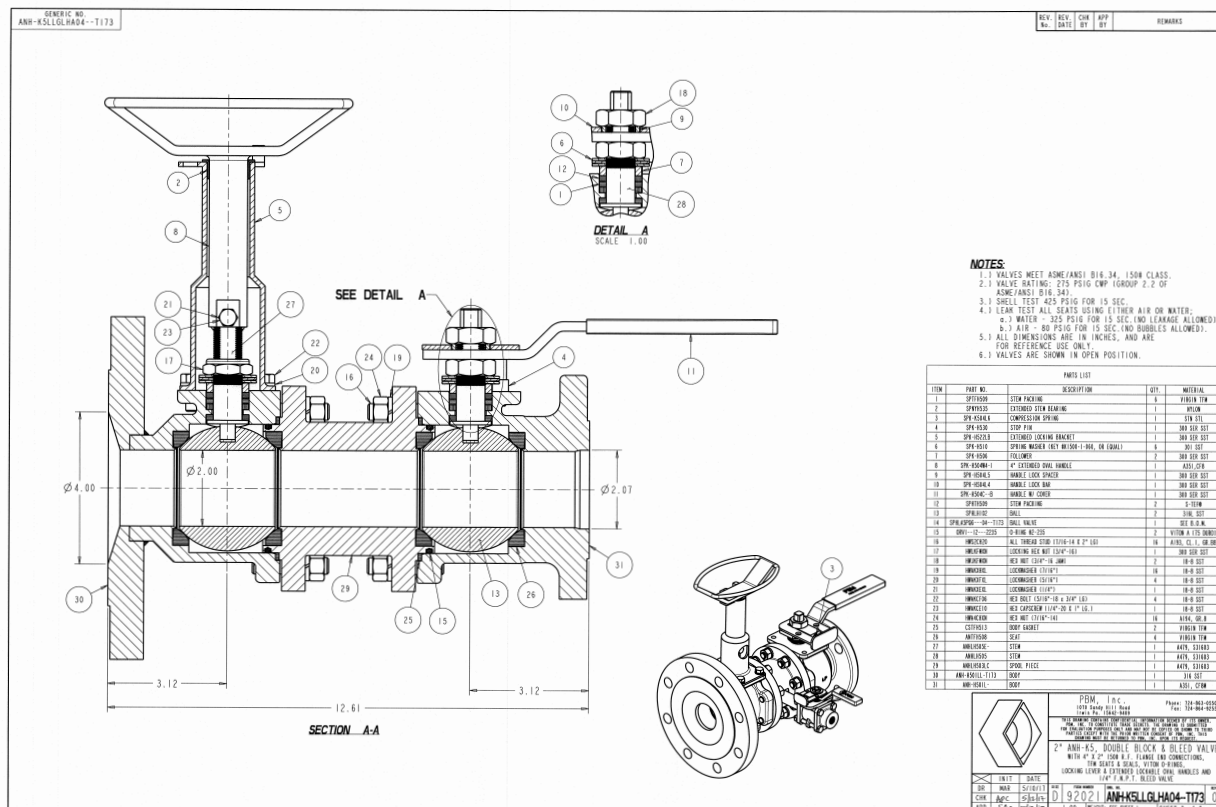
INDUSTRY: CHEMICAL & RESIN MANUFACTURING

PRODUCT: 2" DOUBLE BLOCK & BLEED

MEDIA: DBB ISOLATION OF RESIN INTERMEDIATES

IMI PBM Solution:

A major International Chemical company required a double block and bleed valve to isolate level instrumentation on a process vessel. The vessel contained harmful vapors so operational safety was a top priority. PBM was able to provide a full bore 2-inch valve and adapt to an existing 8-inch flange on the process vessel while meeting a tight delivery schedule.



1070 SANDY HILL ROAD, IRWIN, PA 15642 USA
 1-800-967-4PBM
 WWW.PBMVALVE.COM
 INFO.PBMVALVE@IMI-CRITICAL.COM

