

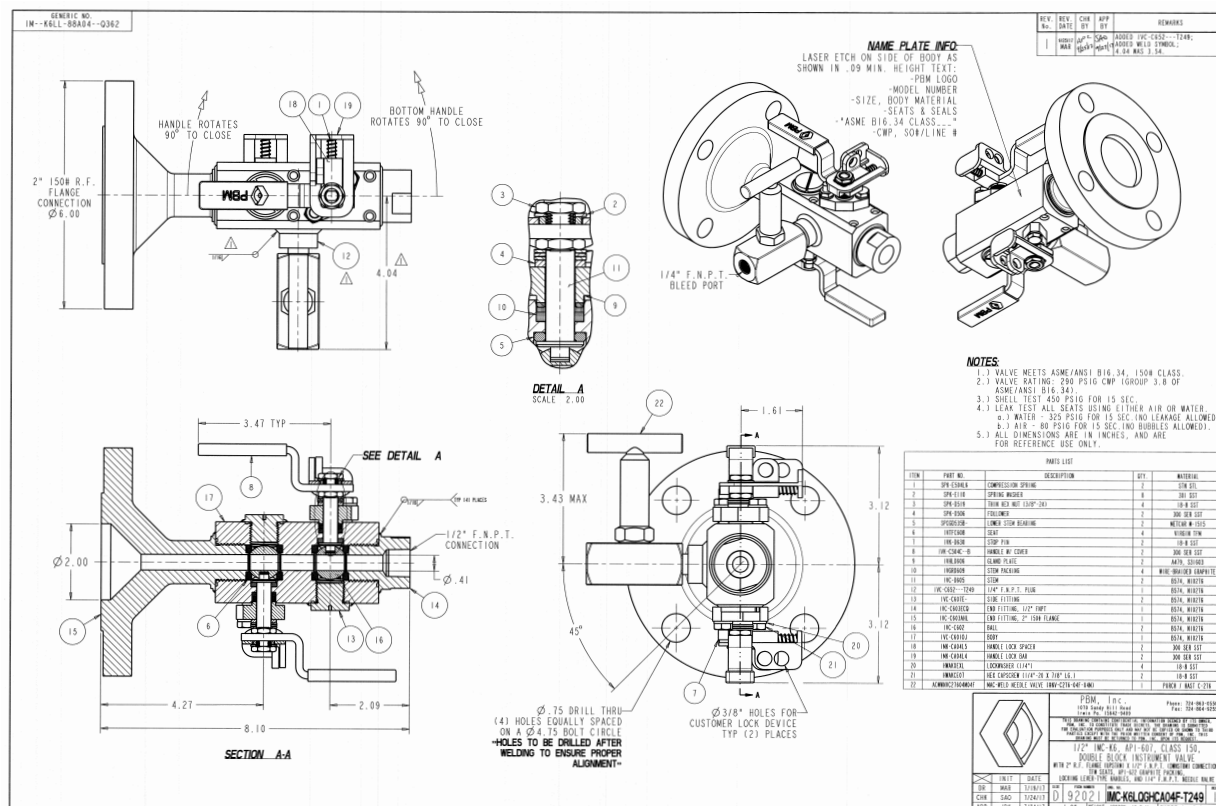


# APPLICATION BRIEF - 116/0917

**INDUSTRY:** CHEMICAL MANUFACTURING  
**PRODUCT:** 1/2" DOUBLE BLOCK & BLEED FIRESAFE  
**MEDIA:** CORROSIVE GASES

## IMI PBM Solution:

Existing process system has corrosive gases at various levels in the column. Client needs instrument interface capability and upgraded safety of double positive isolation in Hastelloy 276. Existing Flanges on column are 2" 150#RF but reduced porting for the instrument readings is satisfactory. Changing / cutting vessel ports is, as always, undesirable for cost, recertification, downtime, etc. PBM provides effectively a standard IM DBB valve mounted to simple custom flange interface."



1070 SANDY HILL ROAD, IRWIN, PA 15642 USA  
 1-800-967-4PBM  
 WWW.PBMVALVE.COM  
 INFO.PBMVALVE@IMI-CRITICAL.COM

