



APPLICATION BRIEF - 18/0805

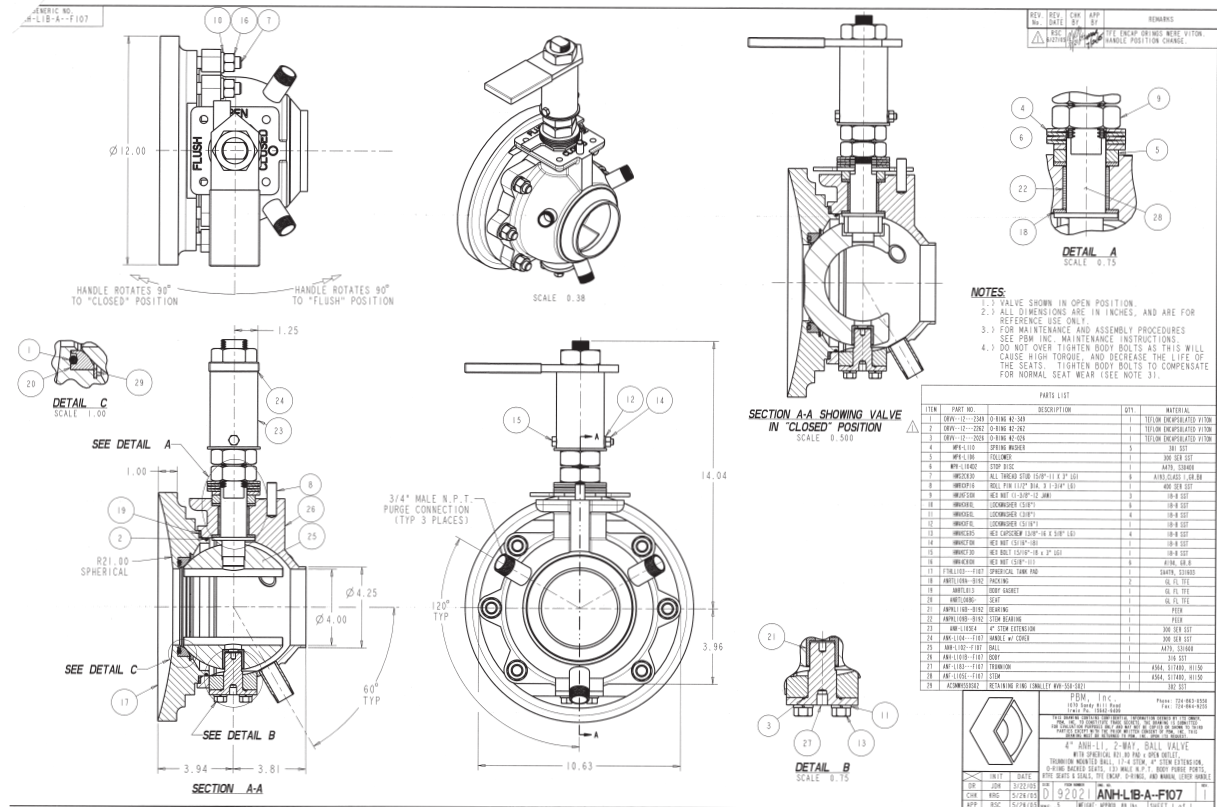
INDUSTRY: CHEMICAL

PRODUCT: FLUSH TANK BALL VALVE WITH SINGLE SEAT, TRUNNION, SEGMENTED BALL, AND PURGE PORTS

MEDIA: RESINS

IMI PBM Solution:

A major chemical manufacturer had problems with fast-setting resins plugging and seizing up drain valves used on their process reactors. PBM provided a valve solution with a low profile assembly that addressed the application issues and fit in the existing space of the problematic valves. The PBM design incorporated a single upstream seat, trunnion mounted segmented ball to facilitate draining, and 3 purge ports to introduce cleaning media that would remove any residual resin that adhered to the valve internals.



1070 SANDY HILL ROAD, IRWIN, PA 15642 USA
 1-800-967-4PBM
 WWW.PBMVALVE.COM
 INFO.PBMVALVE@IMI-CRITICAL.COM

