

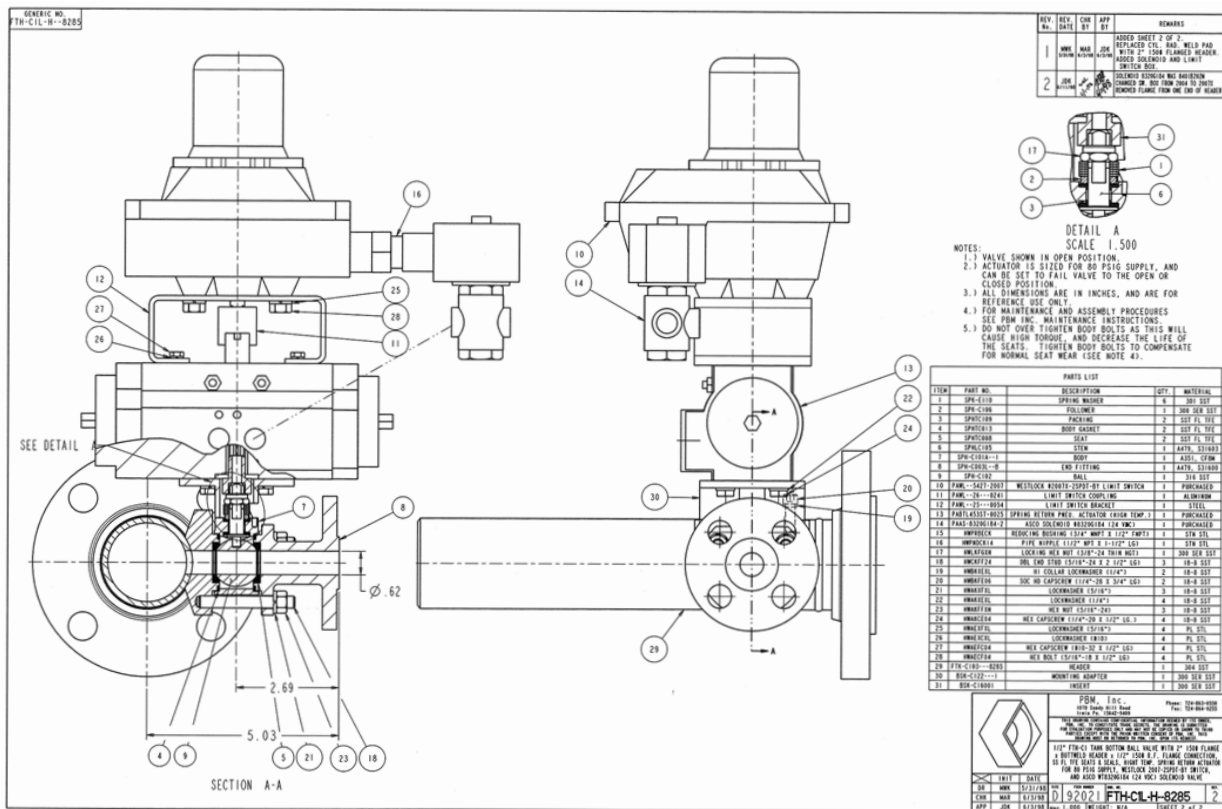


APPLICATION BRIEF - 72/1211

INDUSTRY: CHEMICAL
PRODUCT: FABFLEX® ASSEMBLY
MEDIA: COLORED INK REACTORS

IMI PBM Solution:

A Pacific Northwest manufacturer of replacement solid color ink “crayons” had a requirement for fabricated valve manifolds for use on each color ink reactor. PBM valve fabricated assembly consisted of a ½” 316 Stainless steel Flush Tank valve with cylindrical radius pad welded to a 1.5 inch butt weld by 150 lb. flanged header. The process media is injected into a reactor through the PBM valve and header at ambient temperature; the reactor is brought up to 392°F typical. Pressure at injection is 50 psig. Typical cycling is 10 cycles per shift, 2 shifts per day. Design and delivery played major roles in this computer/printer firm’s choice.



1070 SANDY HILL ROAD, IRWIN, PA 15642 USA
 1-800-967-4PBM
 WWW.PBMVALVE.COM
 INFO.PBMVALVE@IMI-CRITICAL.COM

