



APPLICATION BRIEF - 81/1211

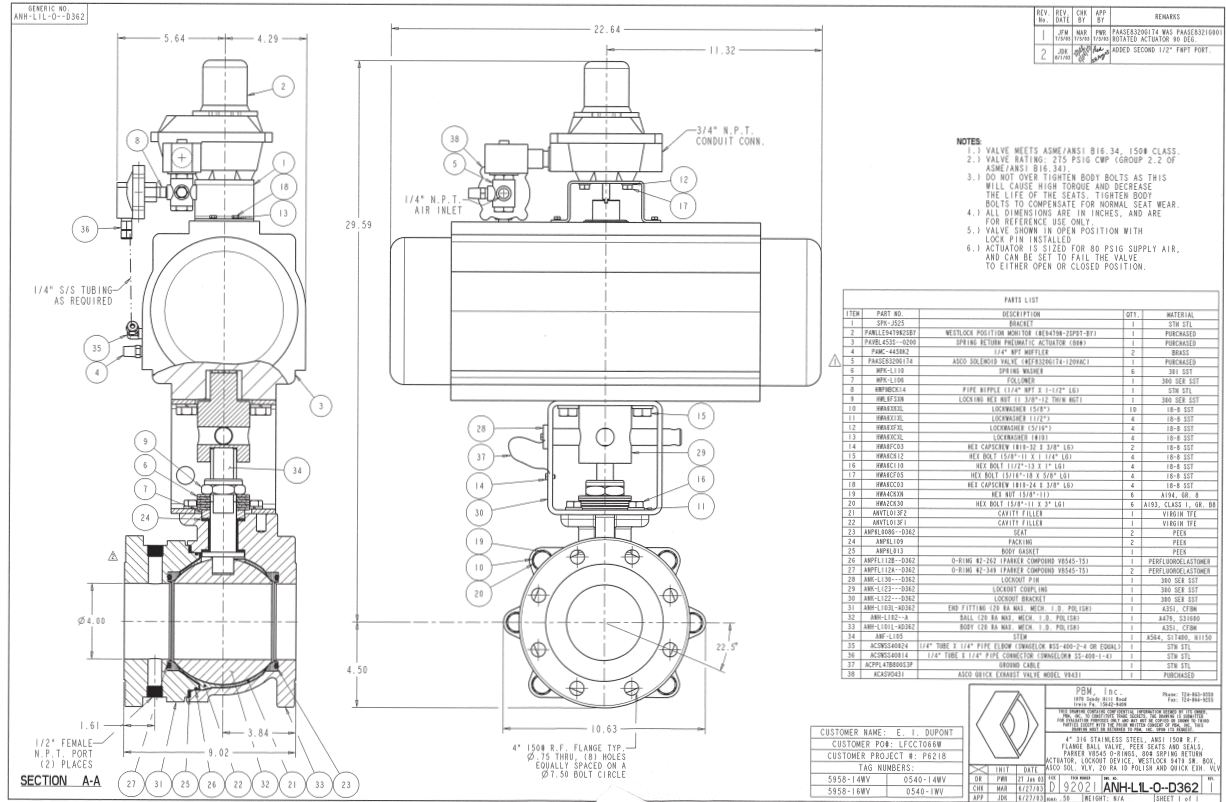
INDUSTRY: CHEMICAL

PRODUCT: ANSI VALVES

MEDIA: SPECIAL FILM USED ON THE BACK OF SOLAR PANELS

IMI PBM Solution:

A major supplier to the photovoltaic industry was looking to add an additional valve mounted in series to existing 4-inch PBM ANSI valves to create a double block configuration. The existing PBM 4-inch valve in use performed flawlessly over the years, but the supplier, looking to save money added an economical knife gate valve. The knife gate valves had leakage and performance problems that had an adverse affect on the process. All said and done they decided to remove the leaky knife gates and add an additional PBM valve in series to create a double block on the vessel, validating the old adage “you get what you pay for”.



1070 SANDY HILL ROAD, IRWIN, PA 15642 USA
 1-800-967-4PBM
 WWW.PBMVALVE.COM
 INFO.PBMVALVE@IMI-CRITICAL.COM

