

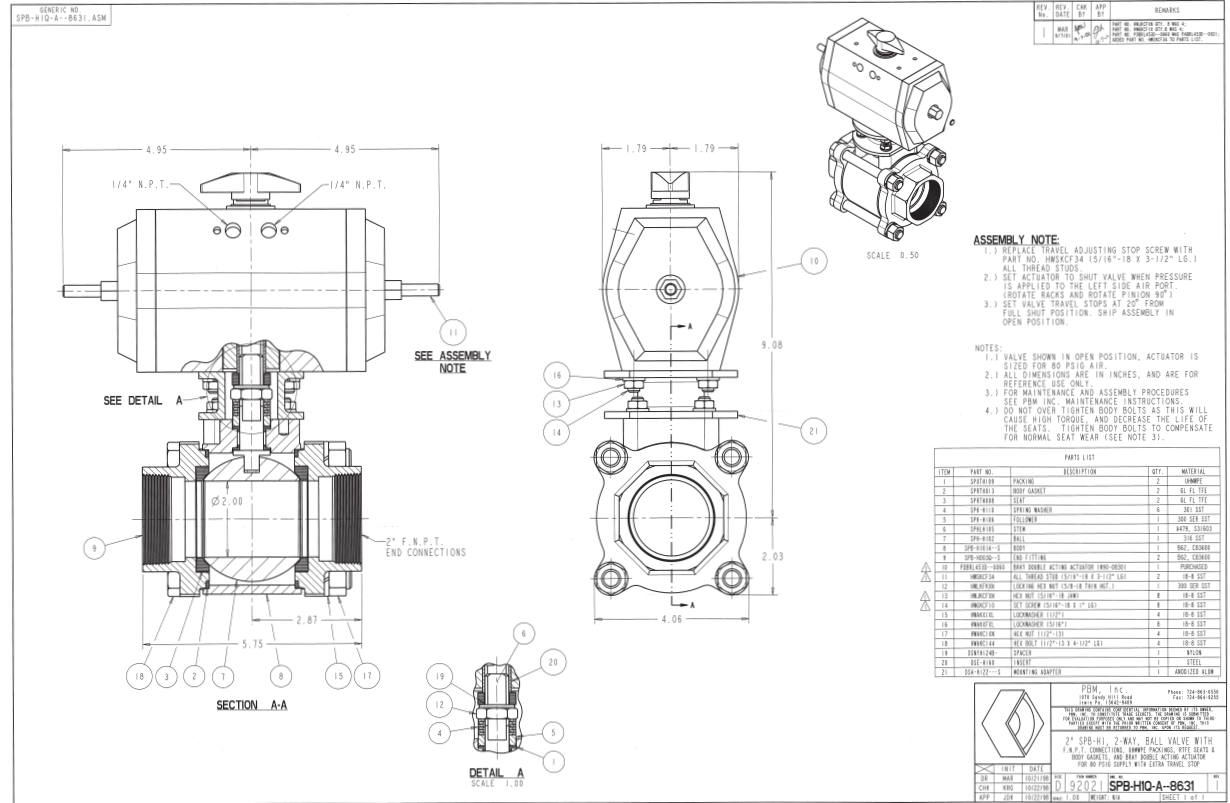


APPLICATION BRIEF - 86/1211

INDUSTRY: CHEMICAL
PRODUCT: 2-WAY BRONZE VALVES
MEDIA: MACHINE COOLANT

IMI PBM Solution:

A new chip filtering system installed at a machining center where metal motorcycle engine parts are produced required valves to control the flow of coolant. PBM valves were durable in high cycle applications meeting the 100-200 cycles per day specification. The 1 and 2" actuated valves made of 836 bronze controlled the flow of the ambient temperature machine coolant at 30 psi. PBM's adjustable sealing also reduced downtime.



1070 SANDY HILL ROAD, IRWIN, PA 15642 USA
 1-800-967-4PBM
 WWW.PBMVALVE.COM
 INFO.PBMVALVE@IMI-CRITICAL.COM

