



APPLICATION BRIEF - 73/1211

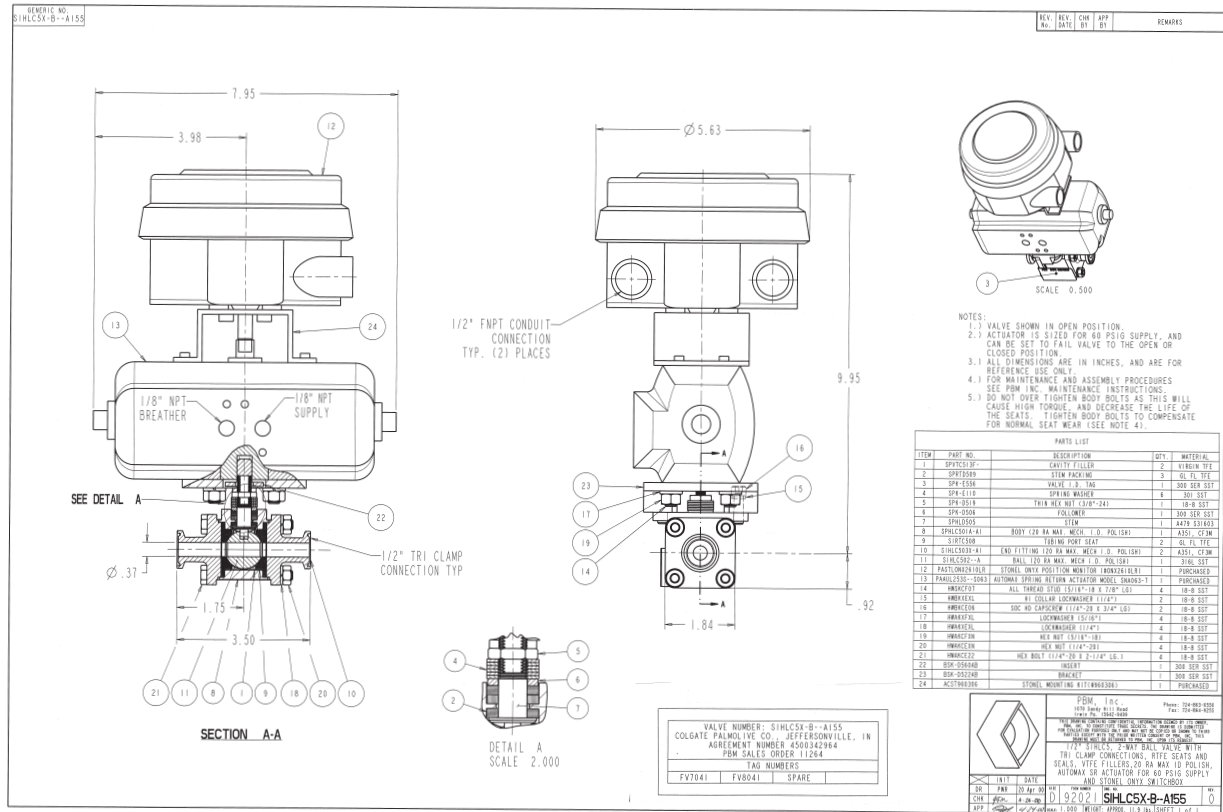
INDUSTRY: CONSUMER PRODUCTS

PRODUCT: IGENIX® 2-WAY BALL VALVES

MEDIA: DI WATER, CAUSTICS, PROPYLENE GLYCOL, GLYCERIN, STEAM, ETC.

IMI PBM Solution:

PBM's sanitary 2-Way ball valves were used on a variety of processes including DI water, caustics, potassium nitrate, propylene, glycol, glycerin, steam, carbowax, and chilled water. The door opened also for PBM's Angle Stem flush tank valves with spray nozzles for tank cleaning on this manufacturer's toothpaste line.



1070 SANDY HILL ROAD, IRWIN, PA 15642 USA
 1-800-967-4PBM
 WWW.PBMVALVE.COM
 INFO.PBMVALVE@IMI-CRITICAL.COM

