



APPLICATION BRIEF - 01/0805

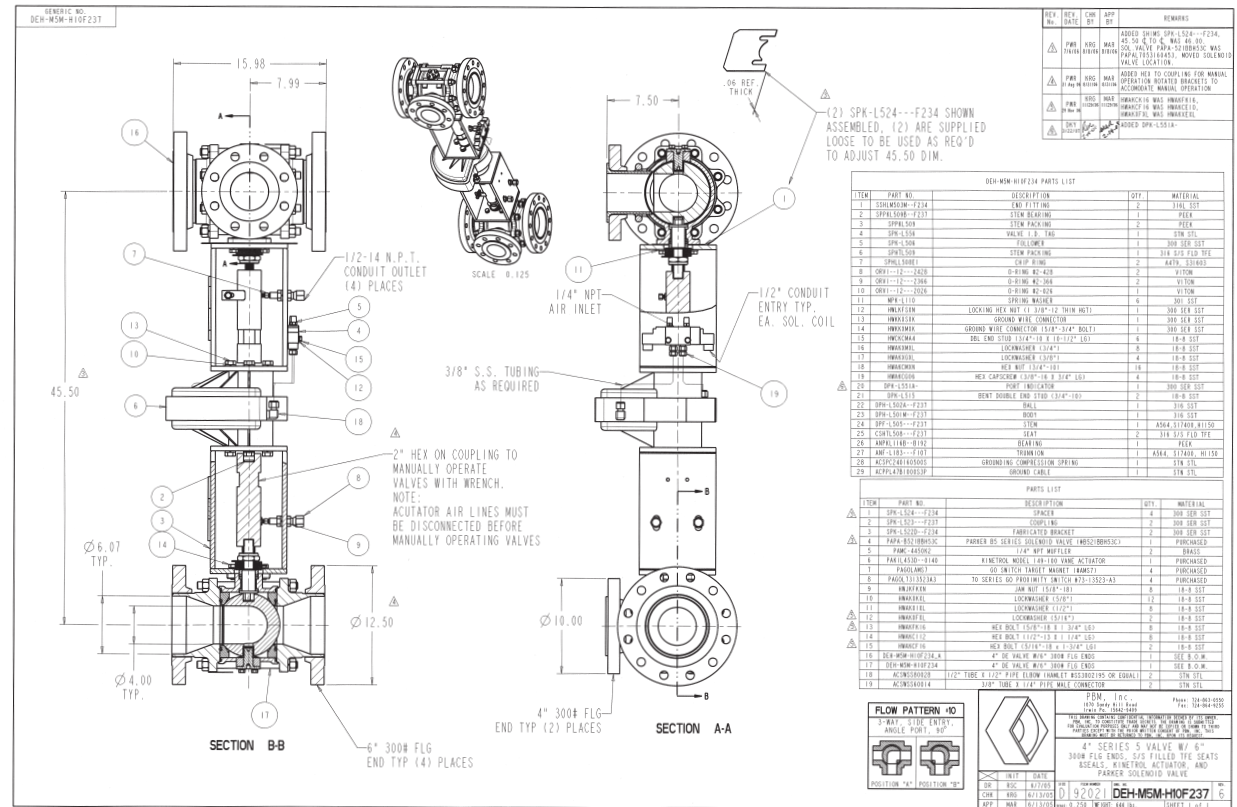
INDUSTRY: POWER

PRODUCT: TANDEM MOUNTED AUTOMATED (DP) DIVERTER PORT BALL VALVES

MEDIA: TURBINE OIL

IMI PBM Solution:

A Midwest US Power Plant replaced high torque plug valves with tandem mounted automated IMI PBM 3-Way Valves, 4-inch port size with 6-inch flanges. These tandem valves, which were mounted inside a cabinet, operate in unison driven by a single pneumatic actuator. This valve assembly, used on the turbine oil filter system, operates at 285 PSI. As one valve "opens", the other valve "closes" to isolate one of two turbine oil filter housings for maintenance, allowing a second filter to continue in operation. Each valve provides "trans-flow" during filter change over to prevent dead-heading. IMI PBM was able to design this assembly to fit the customer's existing piping envelope, eliminating costly piping fabrication changes.



IMI PBM • 1070 SANDY HILL ROAD • IRWIN • PA • 15642 • USA

PBMVALVE.COM • 1.800.967.4PBM • INFO.PBMVALVE@IMI-CRITICAL.COM