



APPLICATION BRIEF - 113/1016

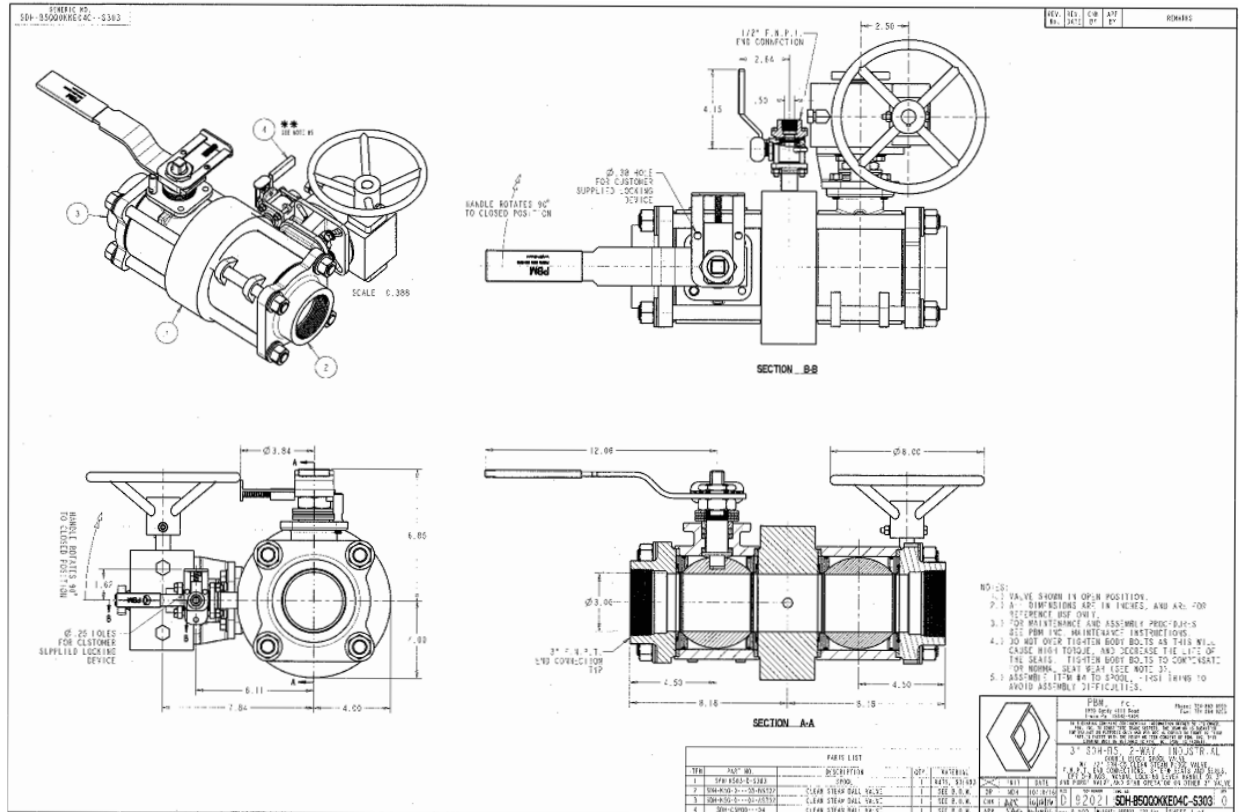
INDUSTRY: FOOD

PRODUCT: DOUBLE BLOCK AND BLEED STEAM ASSEMBLIES

MEDIA: STEAM DISTRIBUTION

IMI PBM Solution:

Replace gate valves, tighter envelope, and 1/4 turn, inline maintain, worm gears on upstream to allow a gradual turn on of steam when coming back into service to avoid system shock. Valve assemblies can take the other guys out of the game, DBB assembly is under one 'asset' designation in their CMMS system. Theoretically less packing leaks for the 1/4 turn projects. Size depends plant steam distribution, so then might use large for a 'wing' or suite, smaller for an equipment 'cluster' where the skids are interdependent and are taken down as a whole, or smaller where independent pieces consuming steam can still operate if others are down. Advocacy is for a survey of such with maintenance planners etc. - Safety and lock out of course.



1070 SANDY HILL ROAD, IRWIN, PA 15642 USA
 1-800-967-4PBM
 WWW.PBMVALVE.COM
 INFO.PBMVALVE@IMI-CRITICAL.COM

