



APPLICATION BRIEF - 31/0506

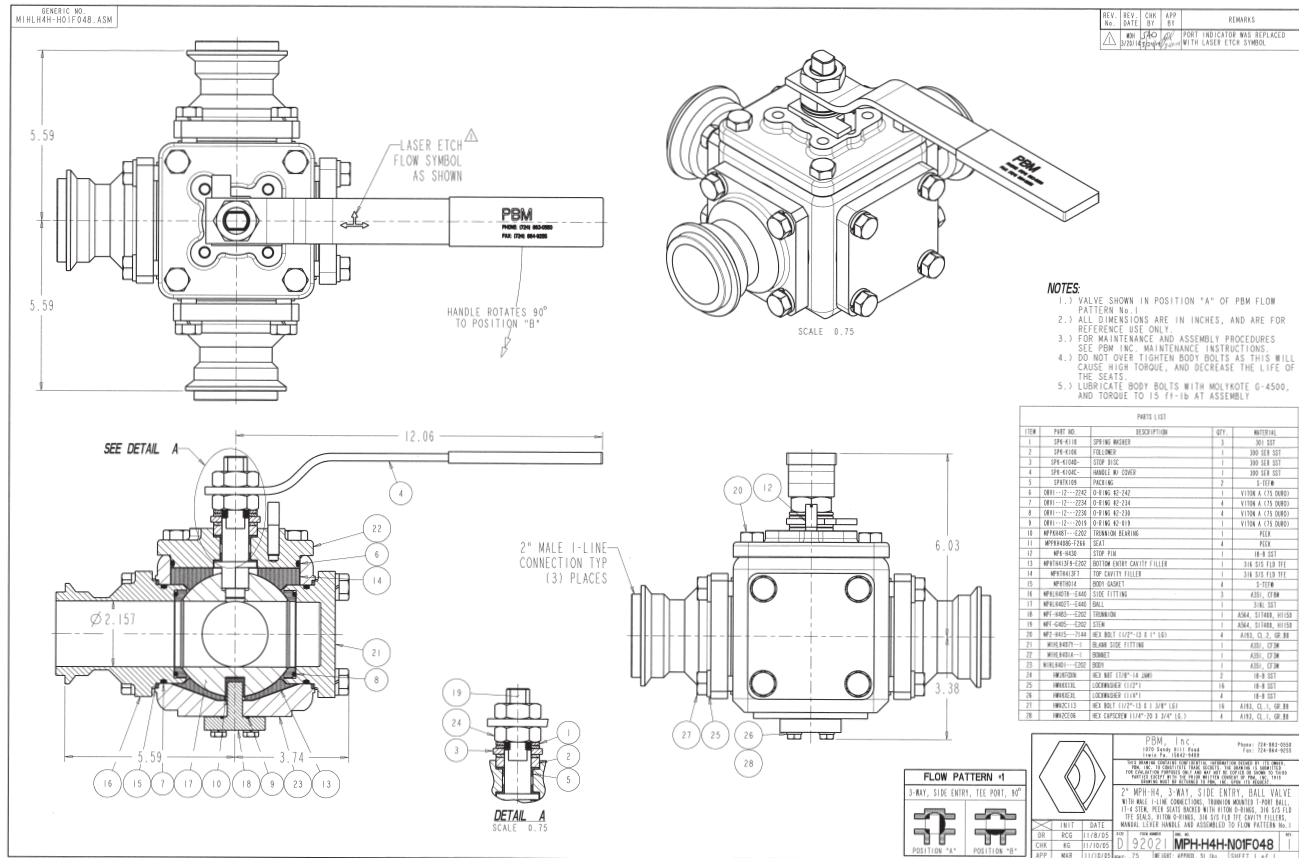
INDUSTRY: FOOD - ANIMAL FEED STOCK

PRODUCT: 2" 3-WAY 316 STAINLESS STEEL TRUNNION-MOUNTED MULTI-PORT BALL VALVE

MEDIA: HYDRATED GRAIN MEAL SLURRY

IMI PBM Solution:

A major mid-west animal feed producer required a 2" 3-way T-ported valve with male I-line end connections to handle hydrated grain meal slurry at 1000 psi and 300 F. PBM supplied a true multi-port valve with PEEK seats and S-TEF™ (316 stainless steel filled PTFE) body cavity fillers to handle the sanitary high pressure media. In addition, a trunnion mounted ball was used to accommodate the high pressure.



1070 SANDY HILL ROAD, IRWIN, PA 15642 USA
1-800-967-4PBM
WWW.PBMVALVE.COM
INFO.PBMVALVE@IMI-CRITICAL.COM

