



APPLICATION BRIEF - 82/1211

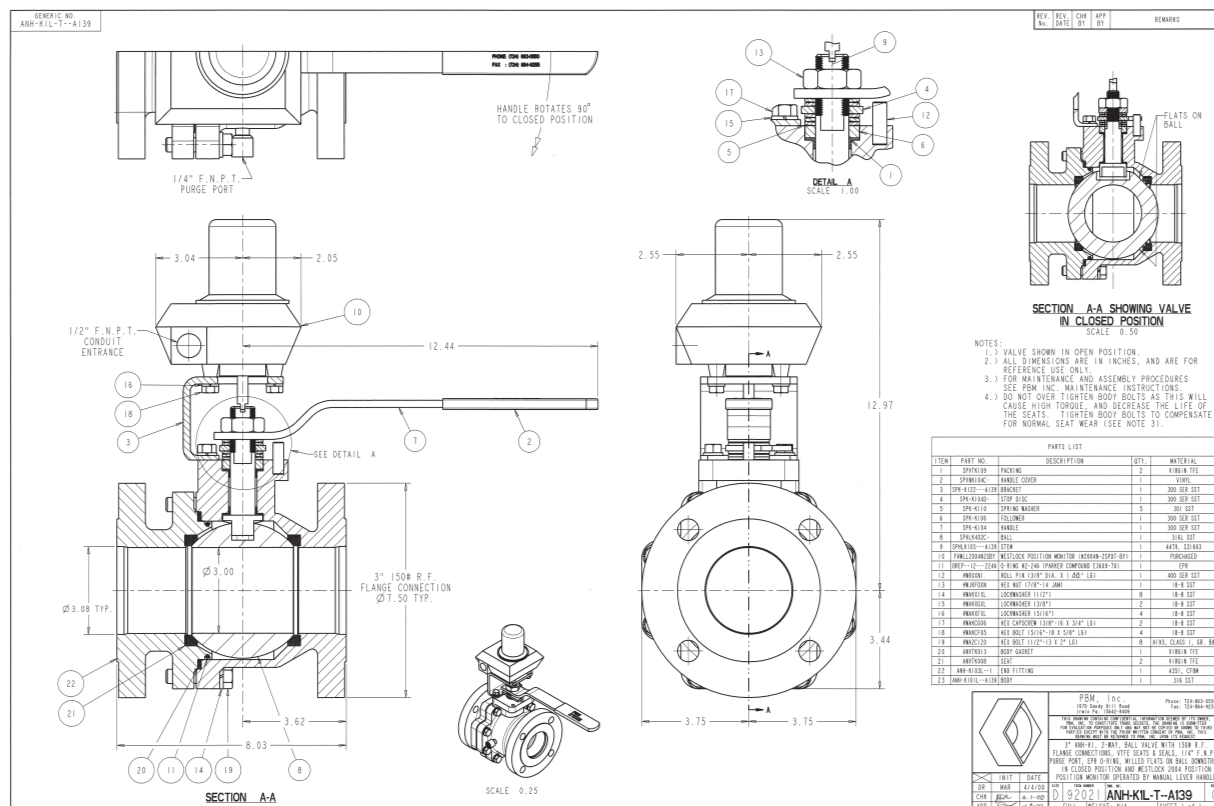
INDUSTRY: FOOD & BEVERAGE

PRODUCT: ANSI FULL PORT

MEDIA: CARAMEL

IMI PBM Solution:

A major food processor required a 2-way 3-inch flanged valve to introduce into a batch process vessel. Isolation during process vessel is extremely critical, PBM's tight shut-off, along with adjust-o-seal played a critical role in this critical process. This manually operated valve also had a position indicator showing both local and remote valve position.



1070 SANDY HILL ROAD, IRWIN, PA 15642 USA
 1-800-967-4PBM
 WWW.PBMVALVE.COM
 INFO.PBMVALVE@IMI-CRITICAL.COM

