



APPLICATION BRIEF - 84/1211

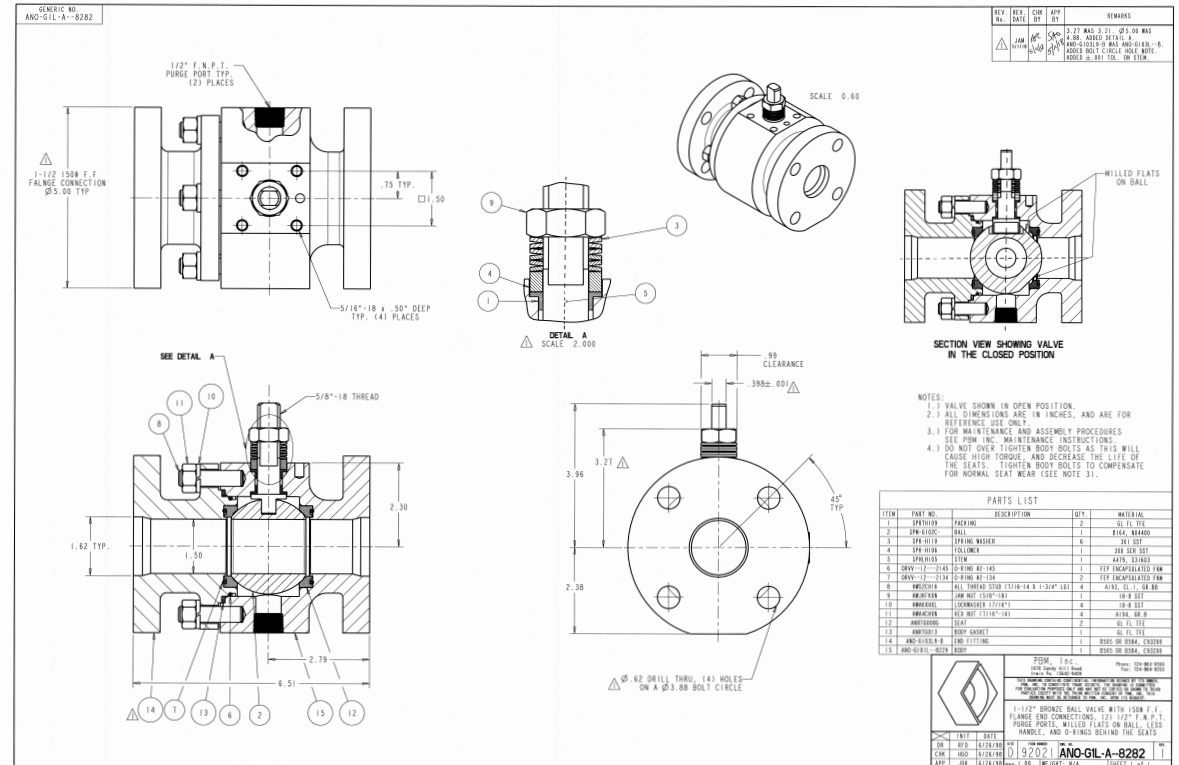
INDUSTRY: FOOD & BEVERAGE

PRODUCT: ANSI

MEDIA: STEAM AND WATER FOR MANUFACTURE OF XANTHAN GUM

IMI PBM Solution:

A manufacturer of xanthan gum uses a critical multi-state fermentation process followed by a number of processes to sterilize, remove excess alcohol, and package the final product. PBM has a number of utility valves located in steam and water lines on the seed and batch fermenters. PBM's valve durability and in-line adjustability contributed to a drastic decrease in downtime compared with previously used ball valves.



1070 SANDY HILL ROAD, IRWIN, PA 15642 USA
1-800-967-4PBM
WWW.PBMVALVE.COM
INFO.PBMVALVE@IMI-CRITICAL.COM

