



# APPLICATION BRIEF - 87/1211

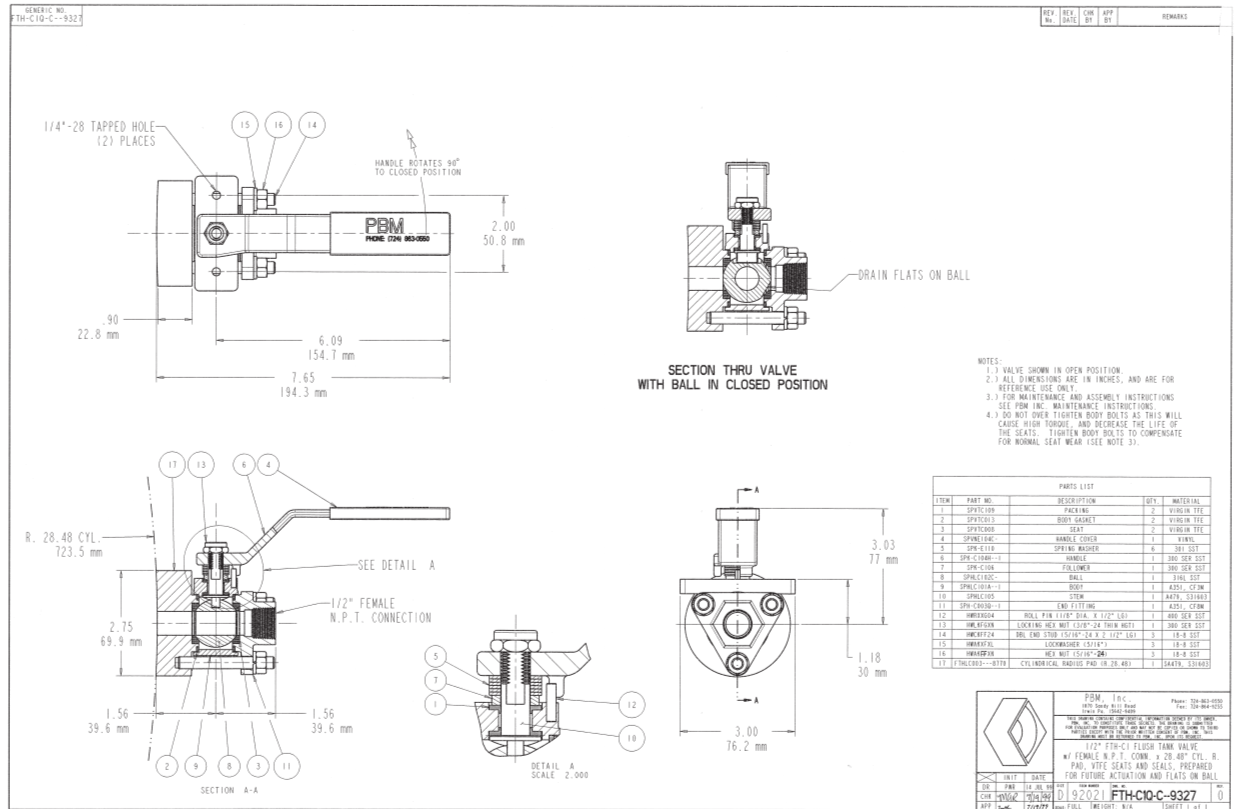
**INDUSTRY:** FOOD & BEVERAGE

**PRODUCT:** FLUSH TANK VALVES

**MEDIA:** COFFEE LIQUOR SAMPLING

## IMI PBM Solution:

A major producer of confectioneries and coffee in the U.K. needed 1/2" and 2" valves for coffee liquor sampling on large tanks and 2" diameter pipelines. Minimum dead leg was needed to ensure a true sample.



1070 SANDY HILL ROAD, IRWIN, PA 15642 USA  
 1-800-967-4PBM  
 WWW.PBMVALVE.COM  
 INFO.PBMVALVE@IMI-CRITICAL.COM

