

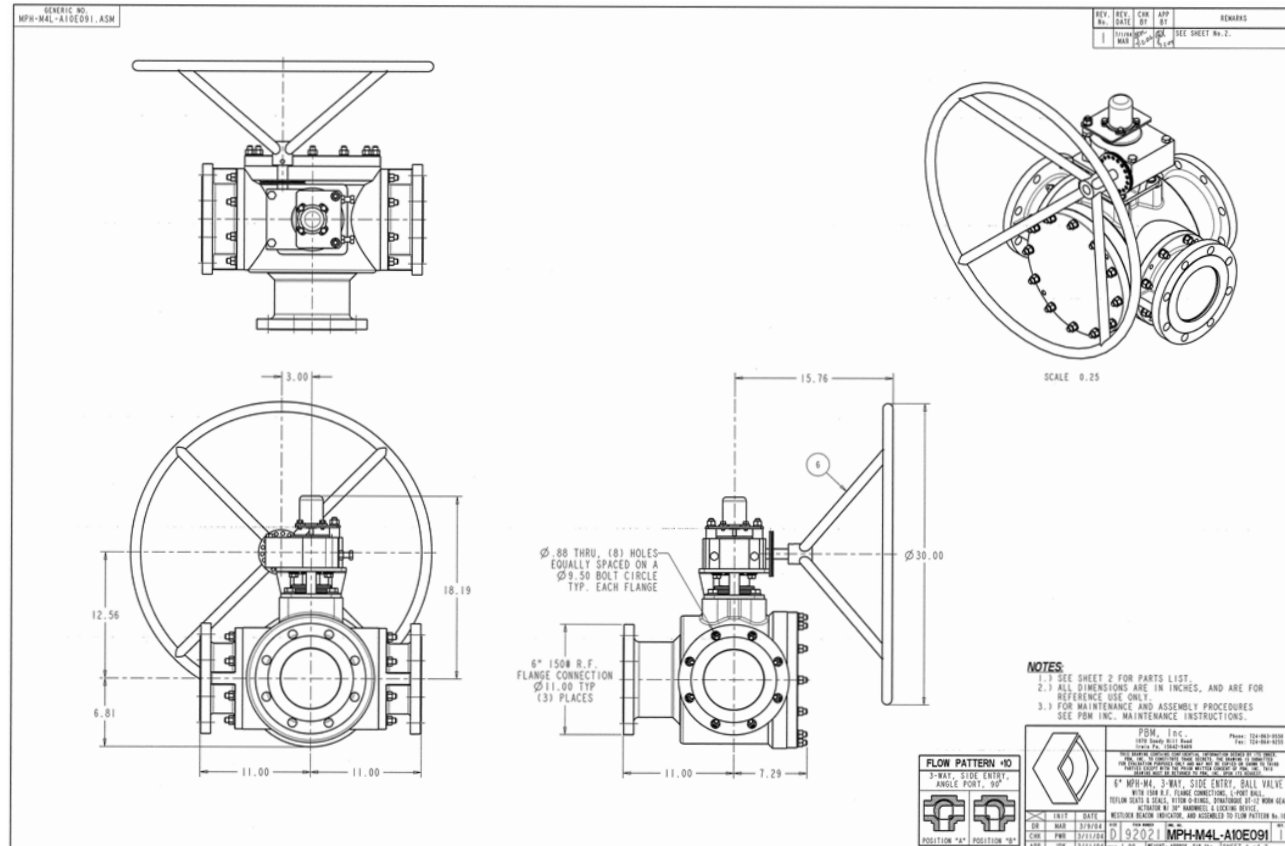


APPLICATION BRIEF - 16/0805

INDUSTRY: MARINE (SHIPBUILDING)
PRODUCT: MULTI-PORT BALL VALVE
MEDIA: GREY WATER

IMI PBM Solution:

A major US shipbuilder required a full port 6 inch valve to divert shipboard grey water to a holding tank while in port. Environmental regulations no longer permit the dumping of grey water within so many miles of US coastline. When the ship is at sea, the valve is rotated to allow grey water to freely flow overboard. PBM's unique 6 inch full port Multi-port provided bubble tight isolation from port to port and full unobstructed flow.



1070 SANDY HILL ROAD, IRWIN, PA 15642 USA
 1-800-967-4PBM
 WWW.PBMVALVE.COM
 INFO.PBMVALVE@IMI-CRITICAL.COM

