

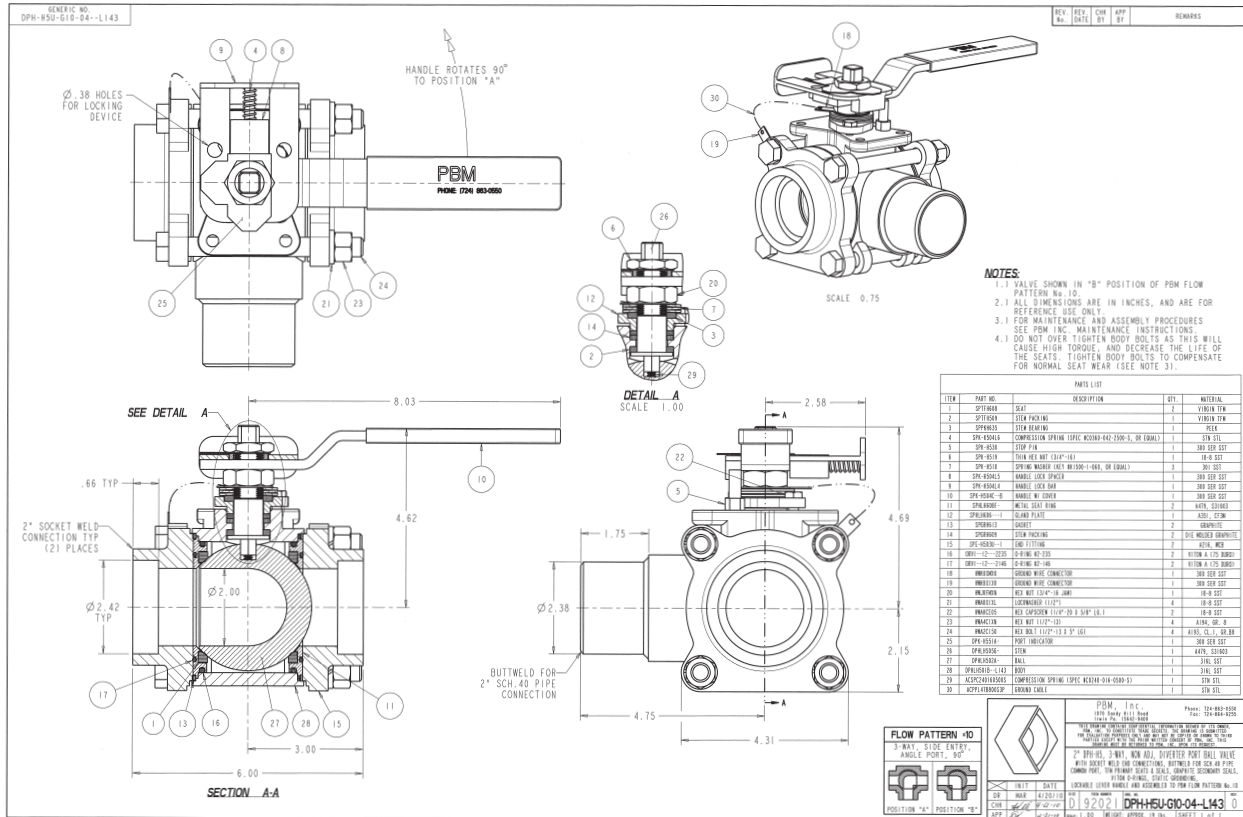


# APPLICATION BRIEF - 47/0510

**INDUSTRY:** MARINE (SHIPBUILDING)  
**PRODUCT:** DIVERTER PORT BALL VALVE  
**MEDIA:** FUEL SYSTEM

## IMI PBM Solution:

This 2" Diverter Port valve was built to firesafe design but with an extended common port. When welding the common port, the heat does not affect the seats and stem packings and does not necessitate the complete disassembly of the valve when welding.



1070 SANDY HILL ROAD, IRWIN, PA 15642 USA  
 1-800-967-4PBM  
 WWW.PBMVALVE.COM  
 INFO.PBMVALVE@IMI-CRITICAL.COM

