



APPLICATION BRIEF - 28/0905

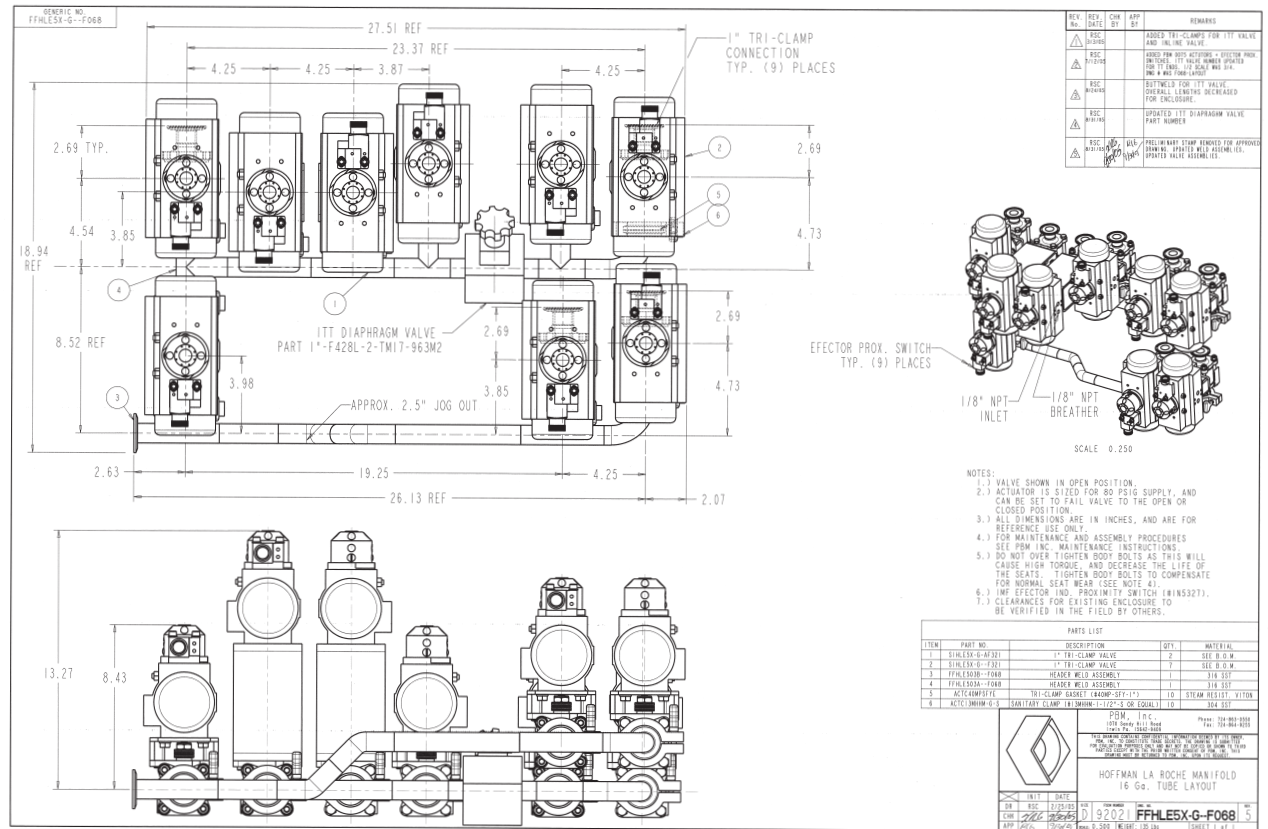
INDUSTRY: PHARMACEUTICAL

PRODUCT: FABFLEX® MANIFOLD WITH AUTOMATED SANITARY BALL VALVES AND MANUAL DIAPHRAGM VALVE

MEDIA: CIP (CLEAN-IN-PLACE) SOLUTION

IMI PBM Solution:

A major pharmaceutical manufacturer required a sanitary valve manifold designed to fit in an pre-existing cabinet enclosure. The sanitary valve manifold, consisting of automated sanitary ball valves and a manual sanitary diaphragm valve is used to supply and re-circulate CIP solution to a granulator. PBM manufactured the sanitary Fabflex® manifold assembly in 4 weeks so installation could take place during a scheduled shut-down. The manifold was manufactured and shipped in 3 sections (connected using a sanitary clamp and gasket) which allowed for easy on-site assembly.



1070 SANDY HILL ROAD, IRWIN, PA 15642 USA
1-800-967-4PBM
WWW.PBMVALVE.COM
INFO.PBMVALVE@IMI-CRITICAL.COM

