



APPLICATION BRIEF - 38/0708

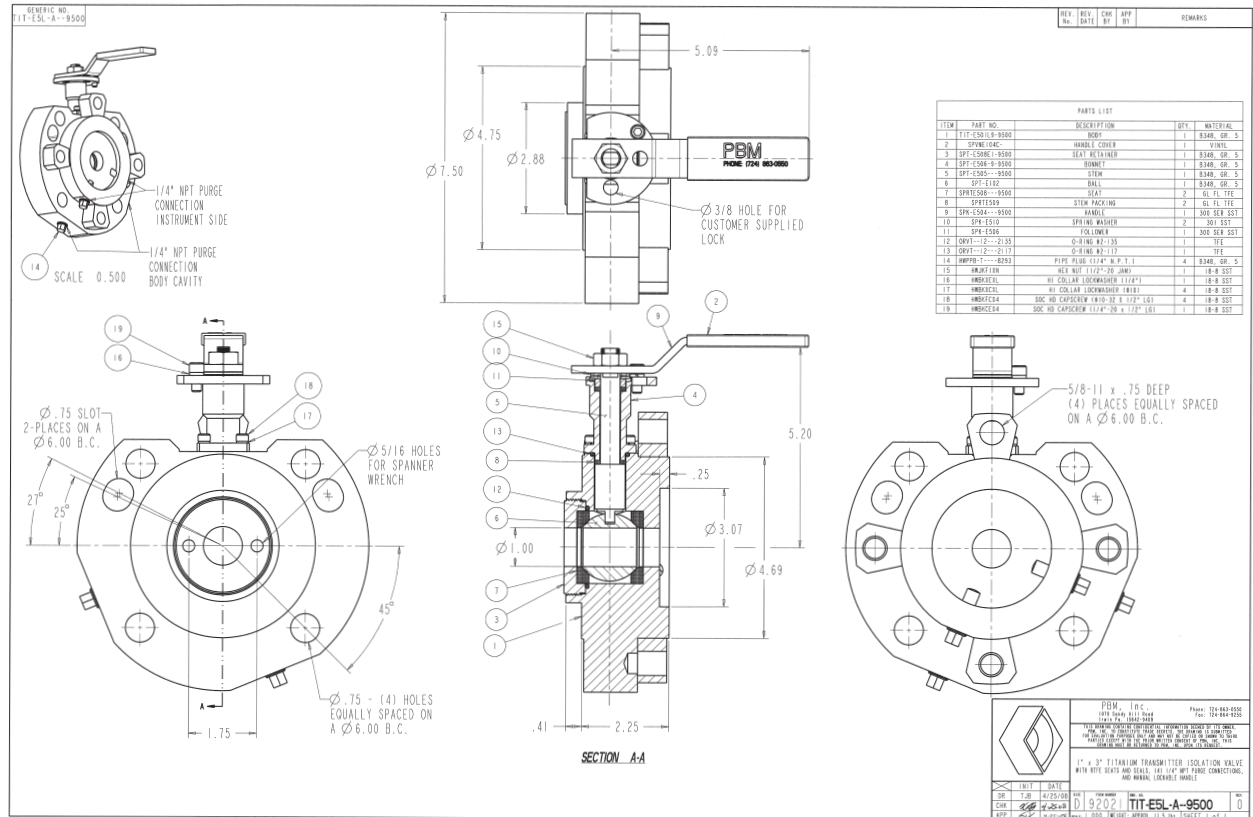
INDUSTRY: PULP AND PAPER

PRODUCT: TRANSMITTER ISOLATION VALVE

MEDIA: CHLORINE DIOXIDE BLEACHED PULP STOCK

IMI PBM Solution:

A major pulp and paper mill required transmitter isolation valves for a process that produces chlorine dioxide used for paper bleaching. The two compatible alloys that would work for this process were either Hastelloy C-22 or Titanium. PBM was able to provide our isolation valves in titanium with a delivery schedule to meet installation requirements for start up. Also, with PBM's reliable Transmitter isolation valve, level transmitters are more accessible and easier to calibrate.



1070 SANDY HILL ROAD, IRWIN, PA 15642 USA
 1-800-967-4PBM
 WWW.PBMVALVE.COM
 INFO.PBMVALVE@IMI-CRITICAL.COM

