



APPLICATION BRIEF - 80/1211

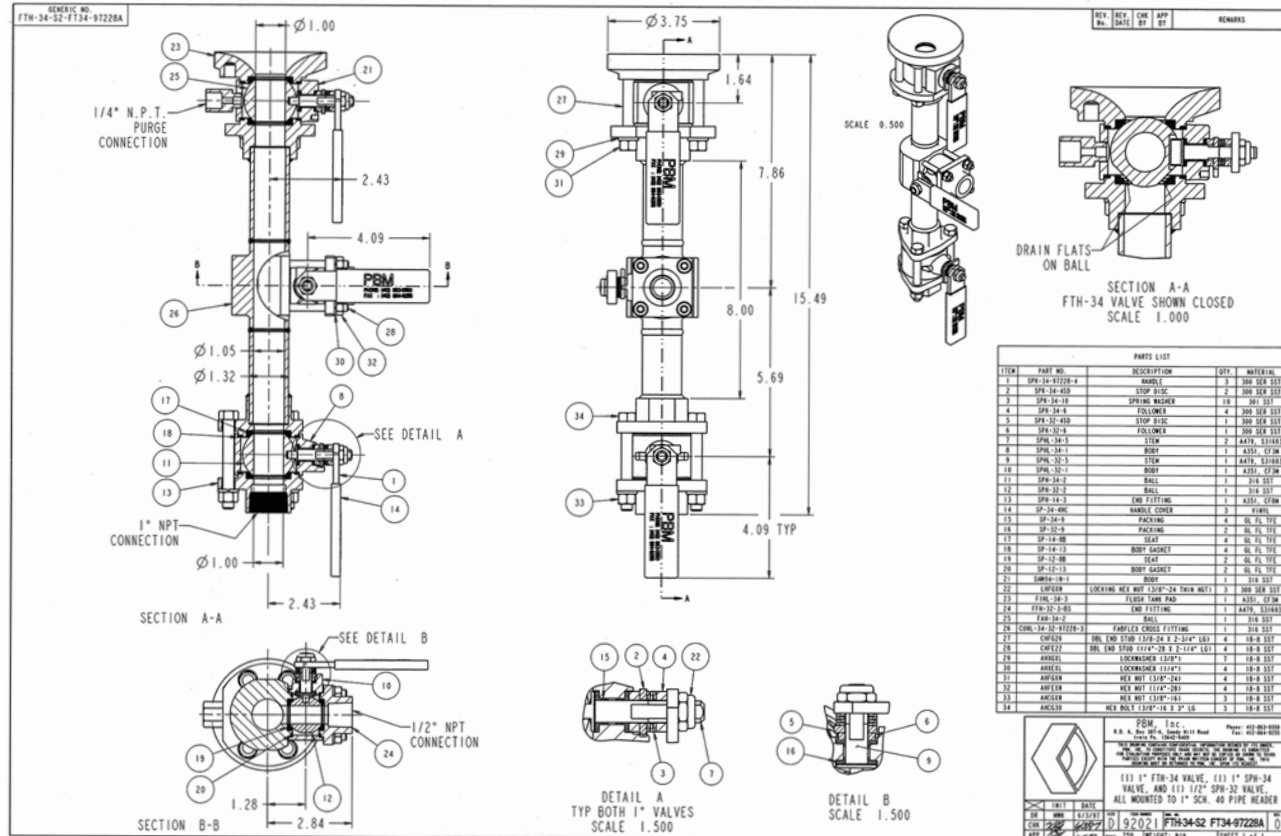
INDUSTRY: PULP & PAPER

PRODUCT: FABFLEX® VALVE, FLUSH TANK VALVE, 2-WAY

MEDIA: STOCK LINES RANGING FROM 1/2% TO 12% PULP STOCK

IMI PBM Solution:

Clean-in-place and sampling were two objectives in this application. The procedure would include the capability of cleaning the valve in place, opening the valve, taking a sample, closing the valve, and cleaning in place again. The testing included placing a sensor inside of the Fabflex header measure the pulses in the paper stock. The pressure wave in the pulp needed to be measured at all times, and a pressure gauge was the best solution. The flush valve at the top of the whole configuration also had a purge port and milled flats to accommodate clean in place.



1070 SANDY HILL ROAD, IRWIN, PA 15642 USA
 1-800-967-4PBM
 WWW.PBMVALVE.COM
 INFO.PBMVALVE@IMI-CRITICAL.COM

