



APPLICATION BRIEF - 101/0613

INDUSTRY: OIL PRODUCTION
PRODUCT: DIVERTER PORT BALL VALVE
MEDIA: OIL, GAS AND WATER

IMI PBM Solution:

Problems:

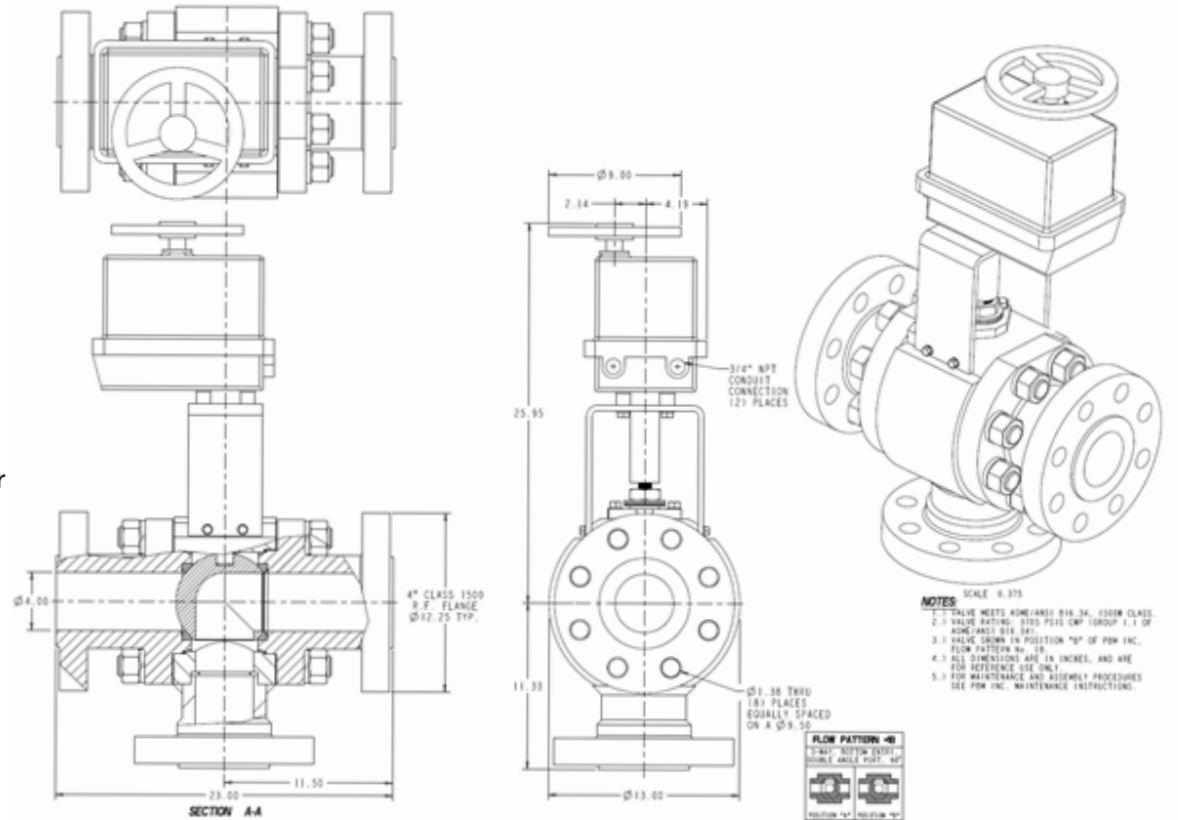
- Space to efficiently configure piping to either the production or test header.
- Automation of old manual systems.
- Control system complexity to synchronize two automated 2-way valves.
- Inherent problems of horizontally mounting electric actuators (cantilever loads on the valve, water egress into unit).

IMI PBM Product – 3-Way, Diverter Port, bottom entry valve allows for well pipe to enter into the bottom of the valve (instead of the traditional side entry) and then flow to either a production header in one direction or a test header in the opposite direction.

- Available in Class 150, through 1,500.

Advantages of the IMI PBM Solution

- Bottom entry allows well pipe coming out of the ground to enter vertically into the valve to optimize space utilization and piping configuration.
- System automation.
- Top mounted electric actuator optimizes space and eliminates horizontal mount issues such as water egress, cantilever loads on the valve stem and packing, etc.
- Cost improvement – one automated 3-Way valve eliminates two 2-way automated block valves.
- Control scheme simplicity – automating one 3-Way valve is much simpler than synchronizing the automation of two 2-way block valves.
- US Manufactured product.
- Automation: Electric or Pneumatic, 90 or 180° operation available.



IMI PBM • 1070 SANDY HILL ROAD • IRWIN • PA • 15642 • USA
PBMVALVE.COM • 1.800.967.4PBM • INFO.PBMVALVE@IMI-CRITICAL.COM