



APPLICATION BRIEF - 106/1214

INDUSTRY: OIL & GAS
PRODUCT: DIVERTER PORT BALL VALVE
MEDIA: MULTI-PHASE OIL/WATER/GAS

IMI PBM Solution:

Process - Switching multiple oil/gas wells at a production collection battery from the production header and separator to the test header and separator. Typically 10-50 automated switching valves per battery. 1000psig WOG design at ambient temperature.

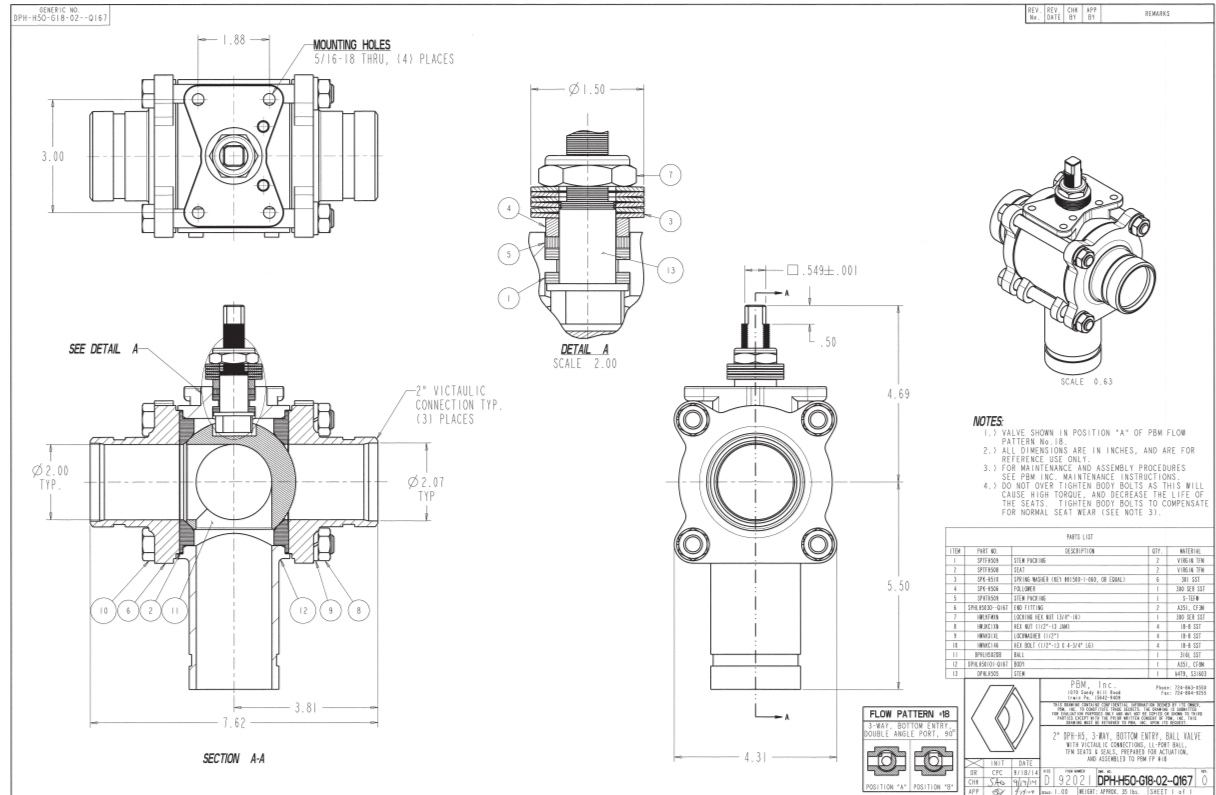
Problems:

- Existing valves are obsolete and not available.
- No direct replacement available.
- Repair parts not available.

PBM Product Description - 2 inch, 3-way, bottom entry, diverter port valve designed to directly replace the obsolete diverter valve currently in service. Designed with clamped end connections and actuator mount to direct mount existing actuators.

Advantages of using PBM product:

- No re-piping required – Direct replacement of existing obsolete valves.
- System automation – Direct mount of existing electric actuators.
- Ease of Repair – PBM valve uses readily available standard repair parts.



1070 SANDY HILL ROAD, IRWIN, PA 15642 USA
 1-800-967-4PBM
 WWW.PBMVALVE.COM
 INFO.PBMVALVE@IMI-CRITICAL.COM

