



APPLICATION BRIEF - 108/1214

INDUSTRY: PETRO-CHEMICAL PLANT

PRODUCT: ANSI STYLE TRANSMITTER ISOLATION VALVE

MEDIA: POLY-ISOBUTYLENE AND STEAM

IMI PBM Solution:

Process - Poly-Isobutylene polymerization process. Transmitter Isolation and Calibration with Upstream Steam Purge Capability. Max Temp = 300°F. Max Pressure = 150psig.

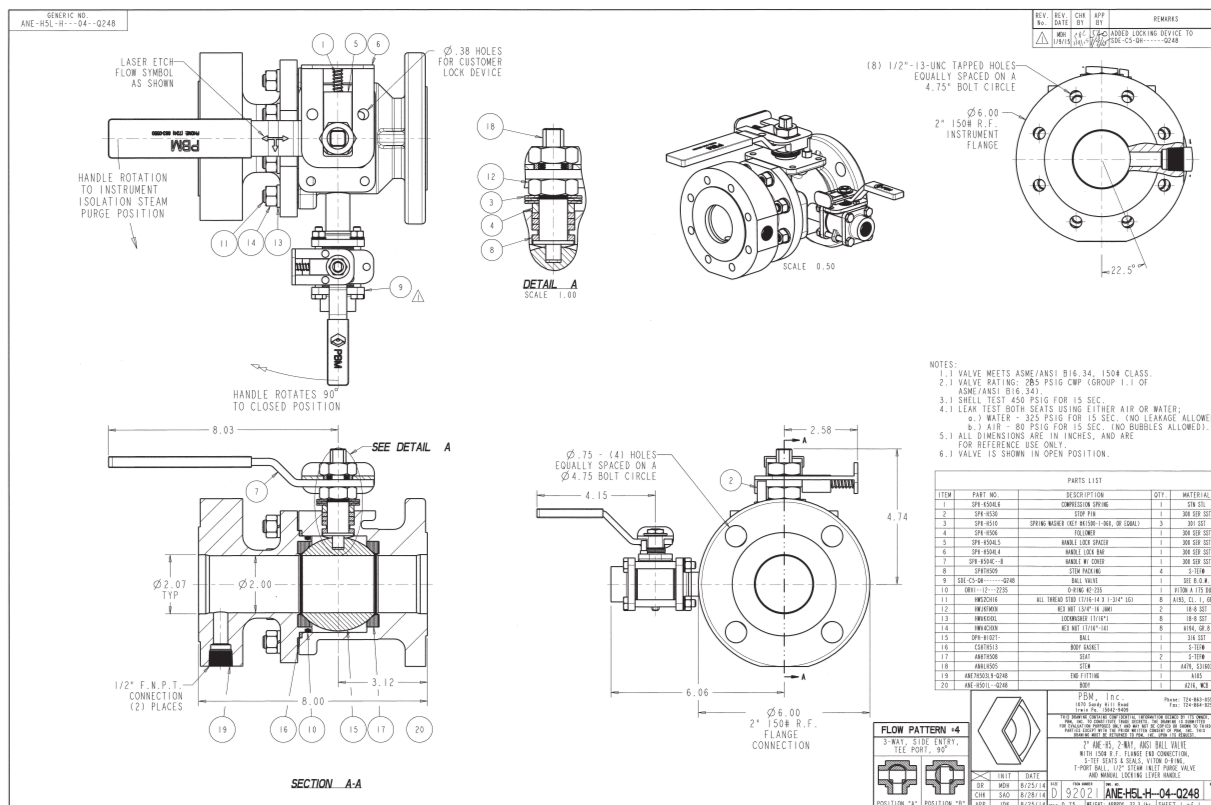
Problems:

- Ability to introduce steam purge into upstream system.
- Ability to isolate the remote diaphragm seal from the system test steam purge heat.
- Ability to purge, flush and calibrate remote diaphragm seal face without removing it from the system.

IMI PBM Product Description: – CL150, ANSI Style 2" x 2" full port Transmitter Isolation Valve (TIV) with Tee Port Ball.

Advantages of using IMI PBM Products:

- Space/Cost Savings – Valve, Steam Purge, Flush/Cal Ring and Transmitter Mount all in one product.
- Fugitive Emissions – Less flange connections = Less potential for fugitive emissions.
- Reliability – Ability to protect the remote seal from heat and ability to isolate, flush and calibrate the remote seal and transmitter without removing the instrumentation from the system.



IMI PBM • 1070 SANDY HILL ROAD • IRWIN • PA • 15642 • USA

PBMVALVE.COM • 1.800.967.4PBM • INFO.PBMVALVE@IMI-CRITICAL.COM