



# APPLICATION BRIEF - 45/0510

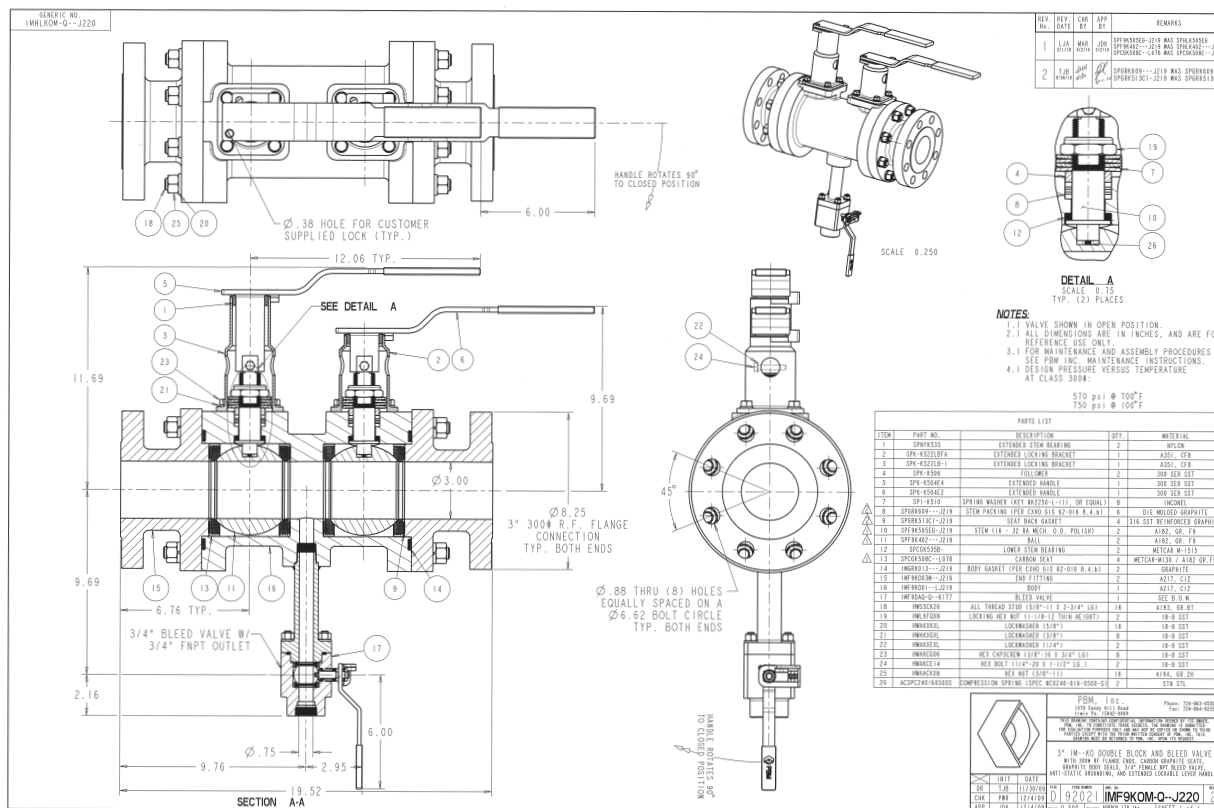
**INDUSTRY:** PETROCHEMICAL

**PRODUCT:** 3-INCH FULL PORT CLASS 300 DOUBLE BLOCK AND BLEED VALVES

**MEDIA:** PRODUCTION OF CRUDE OIL FOR CONVERSION TO DIFFERENT PRODUCTS

## IMI PBM Solution:

A major engineering company needing valves for refinery coker lines chose PBM over the competitors because the valve bodies are one piece, there was less leak paths, a shorter face-to-face and less weight than the current design that was used in the past. This was critical because the valves were mounted on columns and weight was a concern. An additional savings on the length was a savings in space which brought the valves much closer to the vessel.



1070 SANDY HILL ROAD, IRWIN, PA 15642 USA  
 1-800-967-4PBM  
 WWW.PBMVALVE.COM  
 INFO.PBMVALVE@IMI-CRITICAL.COM

