

SANITARY IGENIX® BLOCK & BLEED VALVES

FEATURES:

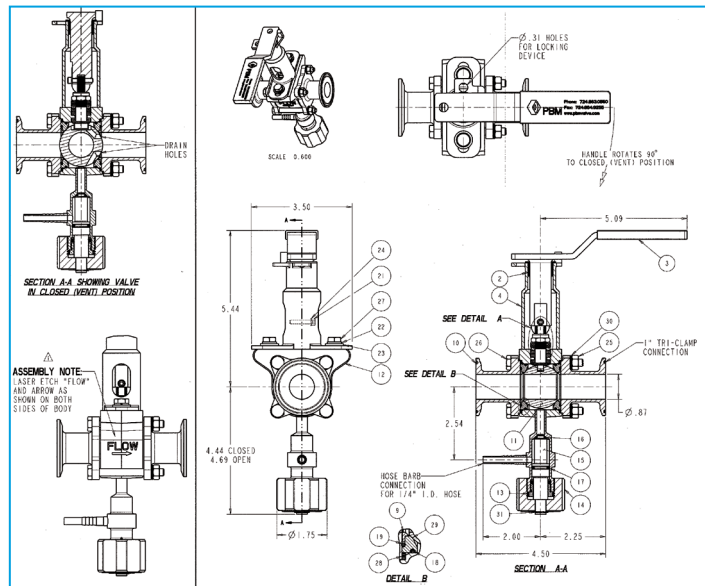
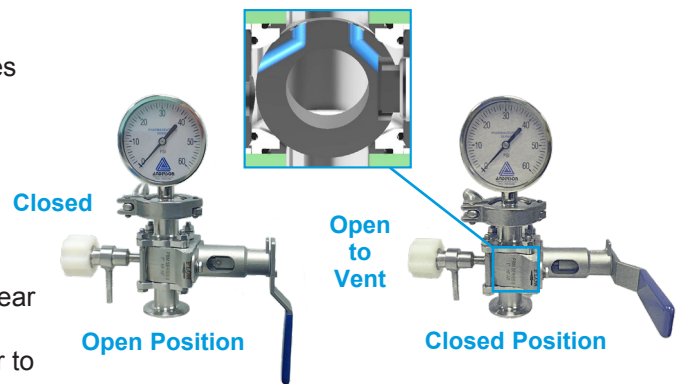
- Adjust-O-Seal® design safely allows for process isolation and instrument bleed.
- Ability to isolate, bleed off pressure and safely remove instruments which are in service on continuous service (i.e. clean steam lines).
- Allows instruments to be removed for calibration or replacement without shutting down main process lines.
- Retrofittable center section for existing installed IMI PBM valve.

PROBLEM:

Common instrument isolation valves retain pressure at instrument even when the isolation valve is off.

SAFE SOLUTION:

IMI PBM Sanitary Block & Bleed Valves prevent pressure build up near instrument. Once the instrument is de-energized, it allows the operator to safely disconnect the instrument.



Use IMI PBM's **Igenix® Sanitary Block & Bleed Valves** to safely isolate the instrument.

These valves allow pressure to be vented safely prior to removing the instrument in place.

www.PBMValve.com

PBM, Inc. • 1070 Sandy Hill Road, Irwin, PA 15642

Phone: 800.967.4PBM • 724.863.0550

E-mail: info.pbmvalve@imi-critical.com

