

IMI PBM OPERATOR 16 CODE

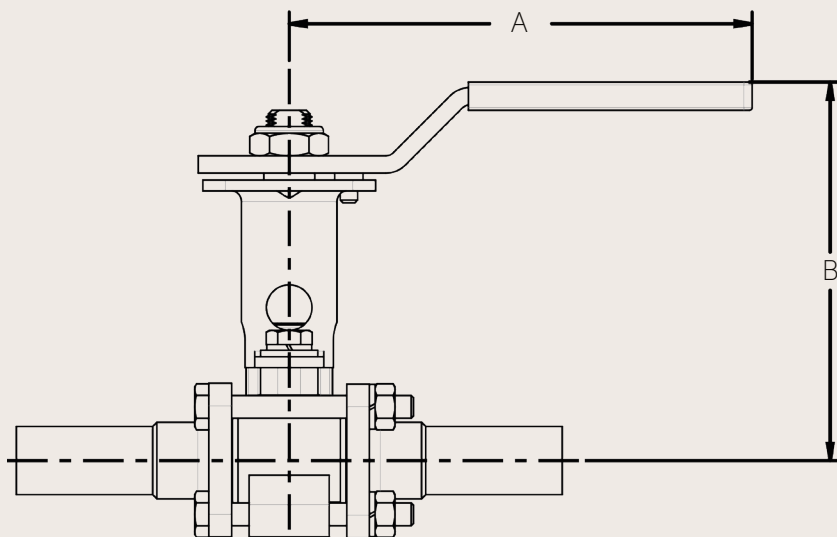
EXTENDED STEM WITH LOCKABLE LEVER HANDLE



DESIGN FEATURES

- Stem height designed to clear standard insulation thickness
- Stem extension can be retro-fitted onto existing valves without additional modification - no stem drilling, no fuss
- Lever handles have a movable stop pin to allow full range of motion in tight spaces
- The 16 Operator Code replaces Operator Codes 71 and 18.

STEM & LEVER DIMENSIONAL CHART



Series 5/6		
Size	A	B
1/4" to 1/2"	5.09"	5.12"
3/4"	5.09"	5.27"
1"	5.09"	5.54"
1 1/4"	8.03"	6.35"
1 1/2"	8.03"	6.35"
2"	8.03"	6.66"
2 1/2"	12.06"	8.23"
3"	12.06"	8.64"
4"	20.06"	9.90"
6"	N/A	N/A

Series 8/9		
Size	A	B
1/4" to 1/2"	5.09"	4.00"
3/4"	5.09"	4.16"
1"	5.09"	4.42"
1 1/2"	8.03"	6.34"
2"	8.03"	6.64"
2 1/2"	12.06"	8.23"
3"	12.06"	8.54"
4"	12.06"	9.33"
6"	N/A	N/A



OPERATOR CODE 16 (CURRENT)



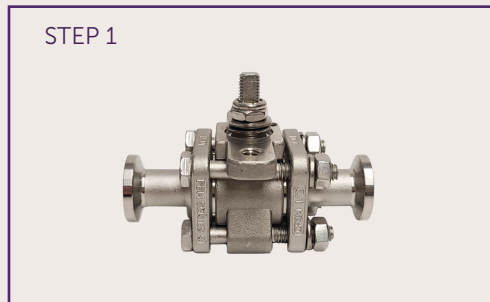
OPERATOR CODE 18



OPERATOR CODE 71



Valve with standard (non-extended) handle.



STEP 1

Remove handle and stop pin. Replace nut with nut lock - tighten per maintenance instructions (IOM-SI89).



STEP 2

Parts contained in kit.



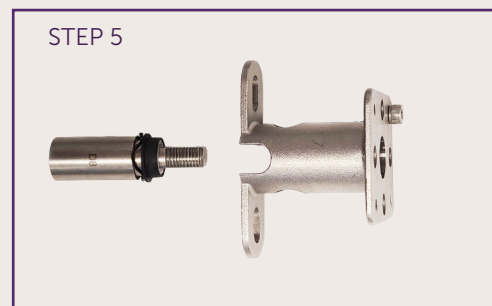
STEP 3

Install wavy washer and brushing on extension.



STEP 4

Install socket head cap screw into bracket. Location will be based on desired handle rotation.



STEP 5

Insert extension thru bracket as shown.



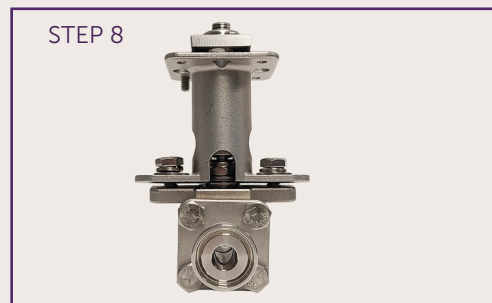
STEP 6

Proper assembly arrangement.



STEP 7

Install handle and secure with lock nut.



STEP 8

Install fasteners through bracket into body. Note: there will be an initial gap between the bracket and body until the wavy washer is compressed.

