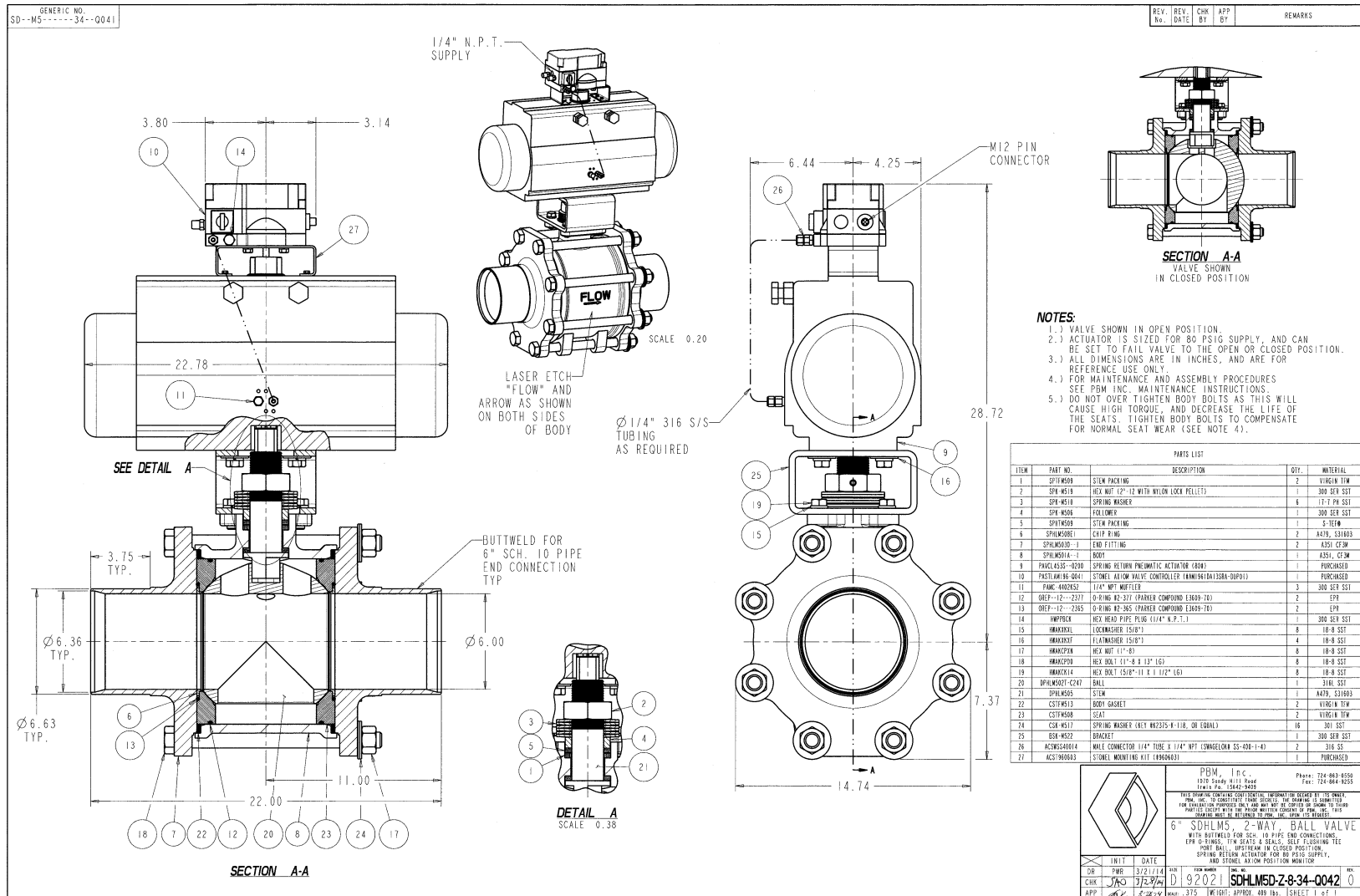


Industry: Biofuels
Product: 2-Way Self Flushing Valve
Media: Sterile fermentation broth



Application Brief: A major chemical company was building a biofuels plant and needed a valve that would be able to clean without disassembly. The application was designed at 135 psi and 265 degree F and was for a liquid slurry of sterile fermentation broth that had high solids. The process also called for the ability to be steamed without any effect on the valve performance. They selected the PBM self-flushing ball valve because of the ease of flushing the cavity and not having any issues with contaminating.