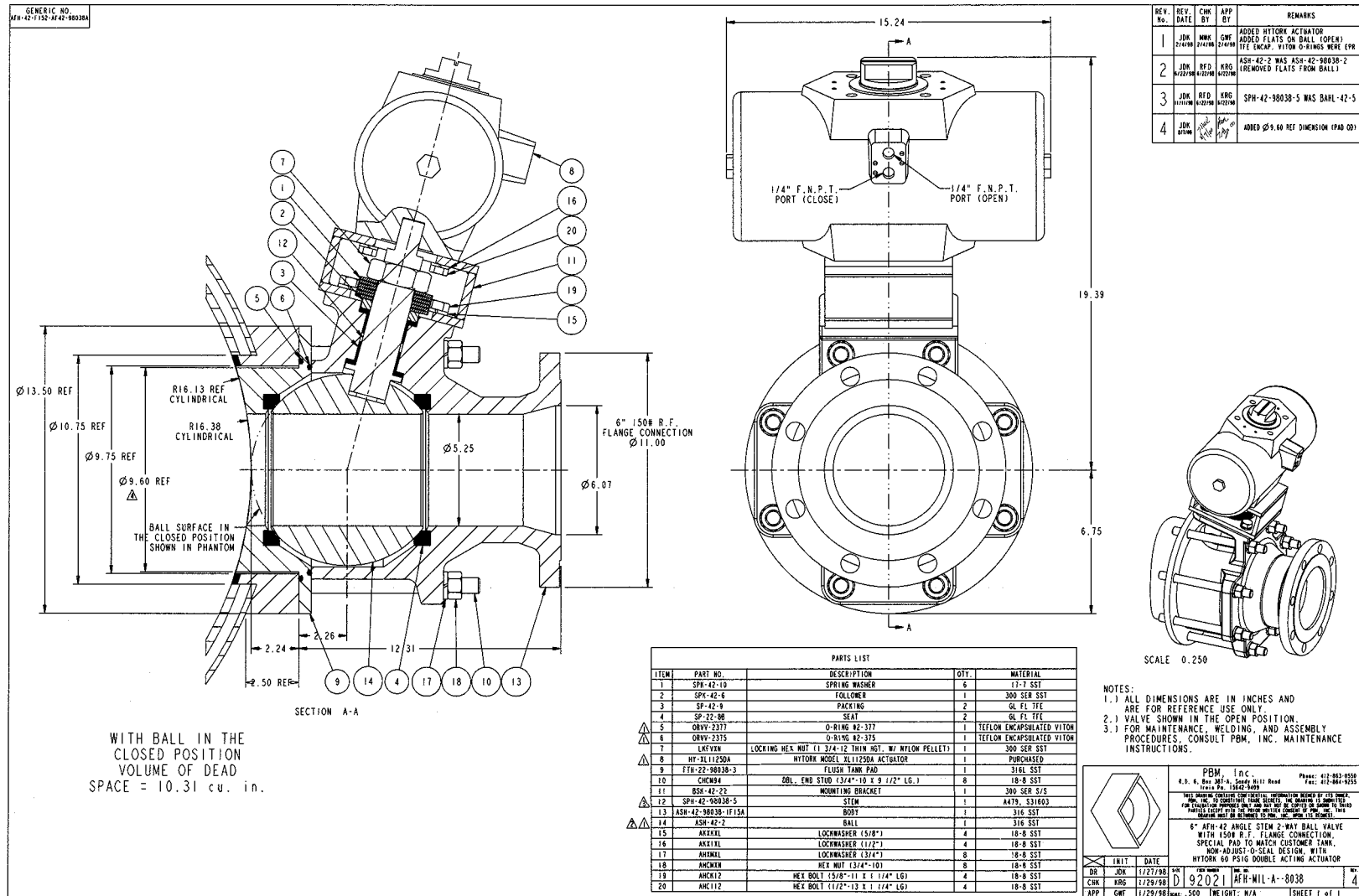


**Industry:** Chemical

**Product:** Angle stem flush tank ball valve, automated, with special adapter weld pad

**Media:** Cellulose resins and acetic acid



REV. No.	DATE	CHK BY	APP BY	REMARKS
1	JDA 2/24/98	MWK 2/24/98	GWF 2/24/98	ADDED HYTORK ACTUATOR ADDED FLATS ON BALL (OPEN) TFE ENCAP. VITON O-RINGS WERE EPR
2	JDA 4/22/98	RFD 4/22/98	KRS 4/22/98	ASH-42-2 WAS ASH-42-98038-2 (REMOVED FLATS FROM BALL)
3	JDA 11/11/98	RFD 11/11/98	KRG 11/11/98	SPH-42-98038-5 WAS BARL-42-5
4	JDA 1/19/99	RFD 1/19/99	KRG 1/19/99	ADDED Ø9.60 REF DIMENSION (PAD ØØ)

ITEM	PART NO.	DESCRIPTION	QTY.	MATERIAL
1	SPH-42-10	SPRING WASHER	6	17-7 SSI
2	SPH-42-6	FOLLOWER	1	300 SER SSI
3	SP-42-9	PACKING	2	GL F5 TFE
4	SP-22-08	SEAT	2	GL F5 TFE
5	ORVY-2377	O-RING #2-377	1	TEFLON ENCAPSULATED VITON
6	ORVY-2375	O-RING #2-375	1	TEFLON ENCAPSULATED VITON
7	LKEYIN	LOCKING HEX. NUT (1.374-12 THIN GGT. W/ NYLON PELLETS)	1	300 SER SSI
8	HY-XL1125DA	HYTORK MODEL XL1125DA ACTUATOR	1	PURCHASED
9	FTR-22-98038-3	FLUSH TANK PAD	1	316L SSI
10	CNCW94	DBL. END STD (3/4"-10 X 9 1/2" LG.)	8	18-8 SSI
11	BSK-42-32	MOUNTING BRACKET	1	300 SER S/S
12	SPH-42-98038-5	STEM	1	A479, S31603
13	ASH-42-98038-1F15A	BODY	1	316 SSI
14	ASH-42-2	BALL	1	316 SSI
15	AMKML	LOCKWASHER (15/16")	4	18-8 SSI
16	AMK111	LOCKWASHER (1/2")	4	18-8 SSI
17	AMKML	LOCKWASHER (3/4")	8	18-8 SSI
18	AMCWH	HEX NUT (3/4"-10)	8	18-8 SSI
19	AMK112	HEX BOLT (5/8"-11 X 1 1/4" LG)	4	18-8 SSI
20	AMK112	HEX BOLT (1/2"-13 X 1 1/4" LG)	4	18-8 SSI

NOTES:  
 1.) ALL DIMENSIONS ARE IN INCHES AND ARE FOR REFERENCE USE ONLY.  
 2.) VALVE SHOWN IN THE OPEN POSITION.  
 3.) FOR MAINTENANCE, WELDING, AND ASSEMBLY PROCEDURES, CONSULT PBM, INC. MAINTENANCE INSTRUCTIONS.

PBM, Inc. Phone: 412-863-9550  
 431 E. 9th St., Steady Hill Road, Erie, PA 16590 Fax: 412-864-9255

6" AFH-42 ANGLE STEM 2-WAY BALL VALVE WITH 150# R.F. FLANGE CONNECTION, SPECIAL PAD TO MATCH CUSTOMER TANK, NOW-ADJUST-O-SEAL DESIGN, WITH HYTORK 60 PSIG DOUBLE ACTING ACTUATOR

DR: JDA 1/22/98  
 CHK: KRG 1/22/98  
 APP: GWF 1/22/98

REV: 4  
 D 92021 AFH-NIL-A-8038  
 WEIGHT: N/A  
 SHEET 1 of 1

**Application Brief:** An International Chemical company was having problems with originally installed "plunger" style drain valves on their mixing tanks. Product would adhere to the plunger and cut the packing which resulted in leaks and the need for frequent repairs. The customer wanted to replace the plunger valves with a reliable valve that offered better flow rates and minimal "pocket" area that would adapt to the existing connection on the tank. PBM designed an adapter pad that mated to the existing tank flange and replaced the plunger valves with automated angle stem flush tank ball valves. The PBM design offered unrestricted flow which allowed the tanks to drain faster resulting in improved productivity.