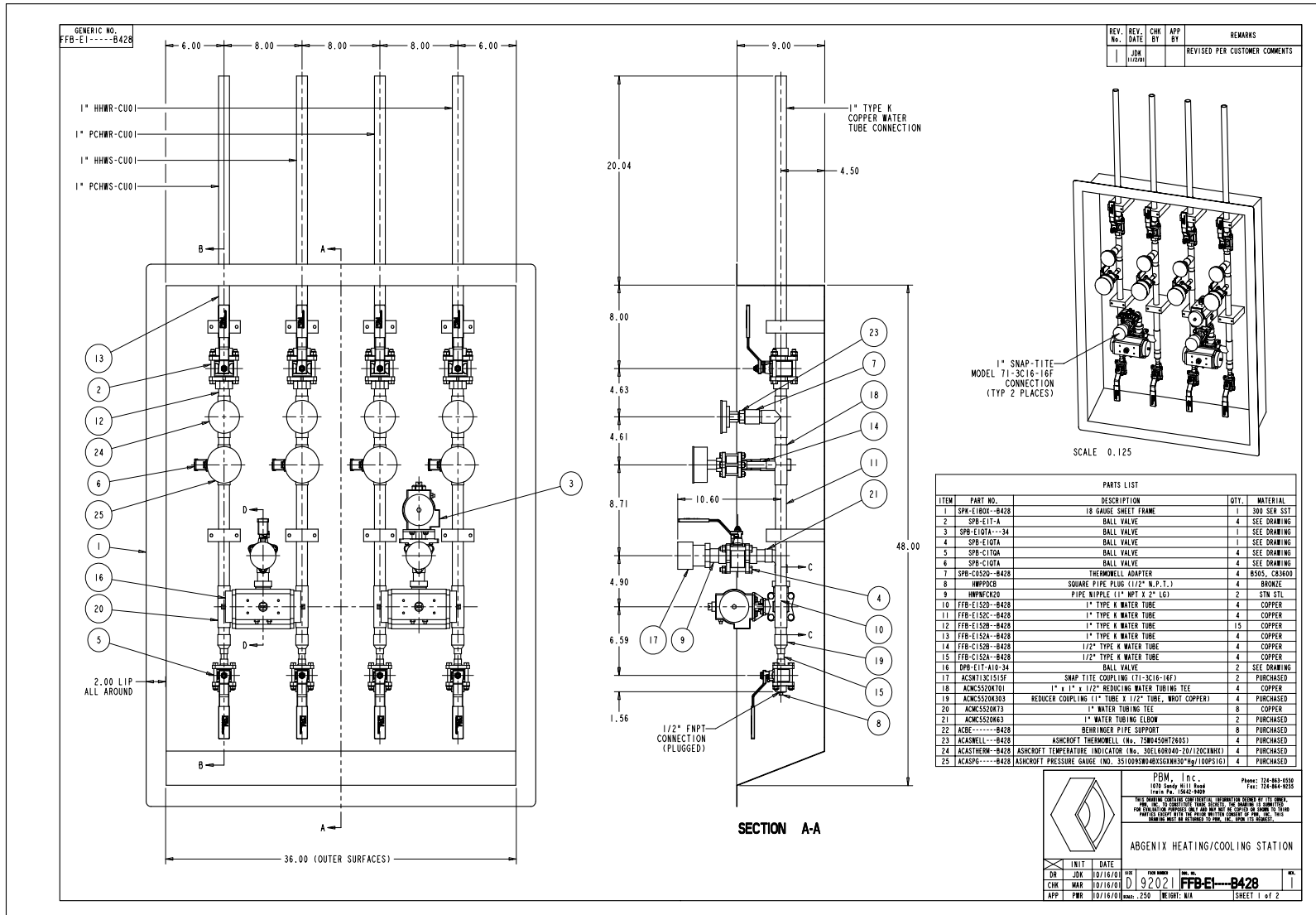


Industry: Pharmaceutical
Product: Fabflex® manifolds mounted in cabinets
Media: Water used for temperature control



Application Brief: A western US Pharmaceutical and Biotech company requested a wall mounted tap-in to their hot and cold water lines where they could mix hot and cold DI water to a specific temperature, and distribute through an automated on-off valve. Temperature and pressure gauges were included, as well as a custom stainless steel recessed cabinet, all constructed by PBM per customer's P&ID and architectural drawings.