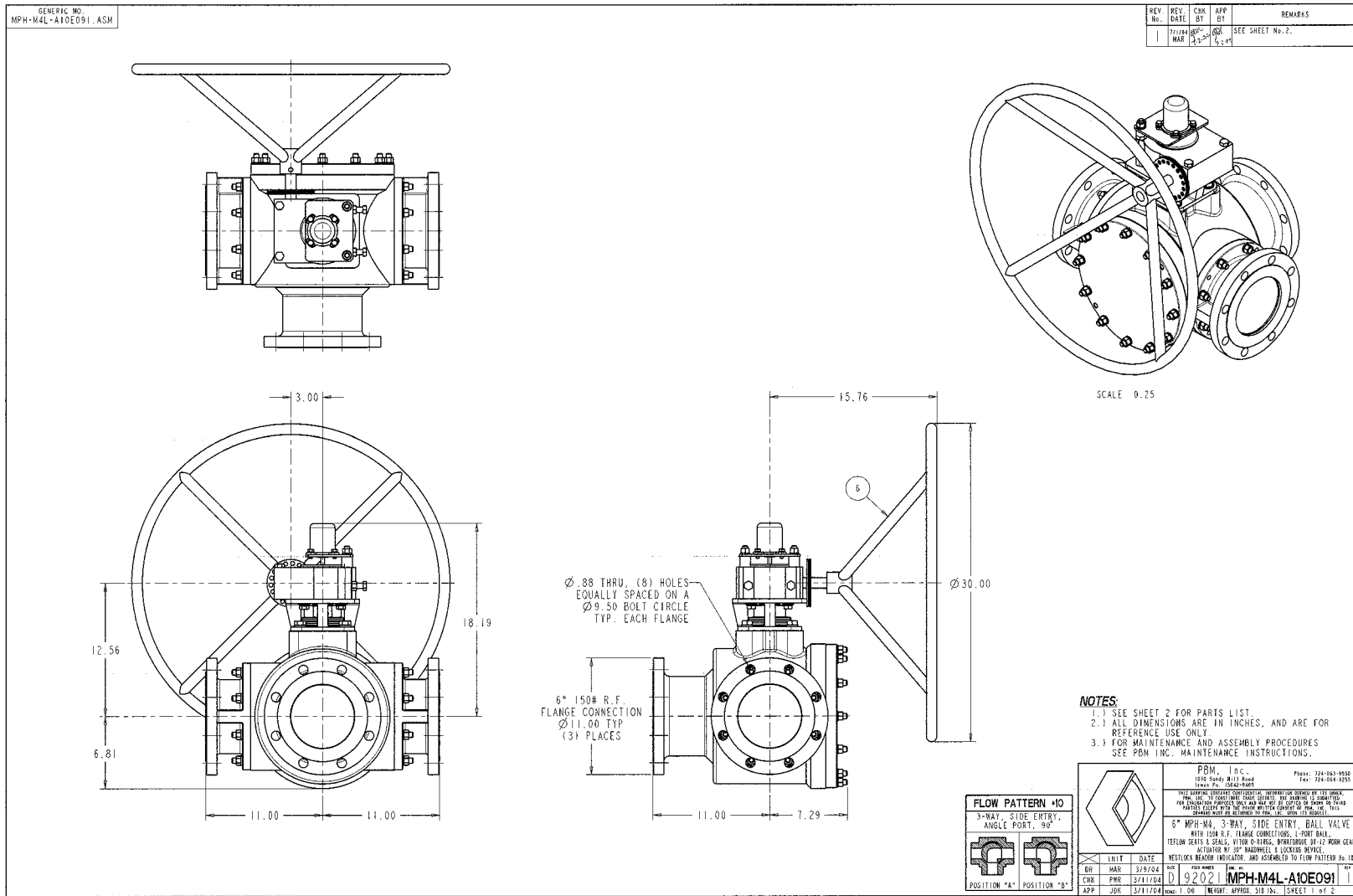


**Industry: Marine (Shipbuilding)**  
**Product: Multi-port ball valve**  
**Media: Grey water**



**Application Brief:** A major US shipbuilder required a full port 6 inch valve to divert shipboard grey water to a holding tank while in port. Environmental regulations no longer permit the dumping of grey water within so many miles of US coastline. When the ship is at sea, the valve is rotated to allow grey water to freely flow overboard. PBM's unique 6 inch full port Multi-port provided bubble tight isolation from port to port and full unobstructed flow.

APPL 0805-16