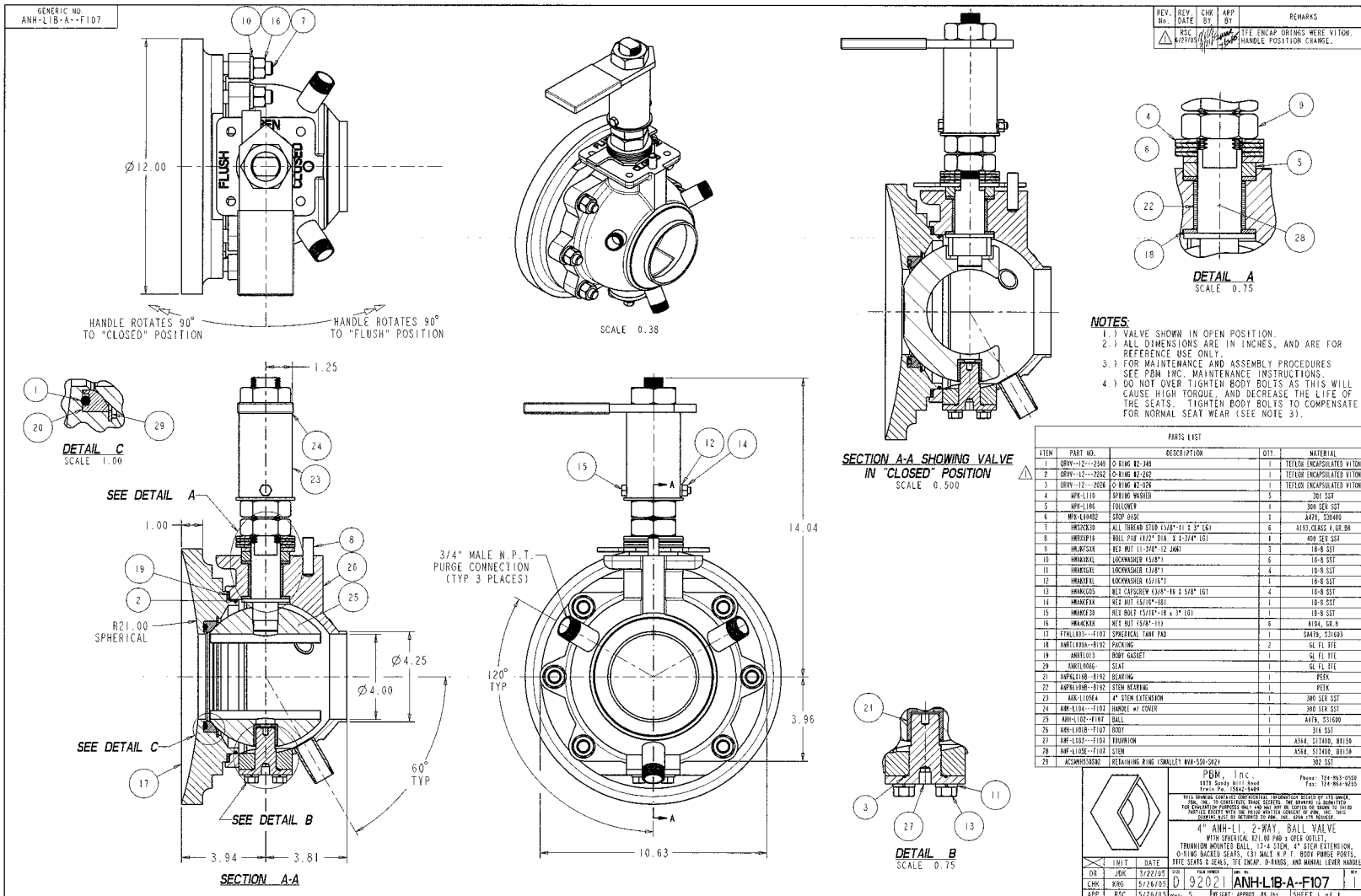


**Industry:** Chemical

**Product:** Flush tank ball valve with single seat, trunnion, segmented ball, and purge ports

**Media:** Resins



**Application Brief:** A major chemical manufacturer had problems with fast-setting resins plugging and seizing up drain valves used on their process reactors. PBM provided a valve solution with a low profile assembly that addressed the application issues and fit in the existing space of the problematic valves. The PBM design incorporated a single upstream seat, trunnion mounted segmented ball to facilitate draining, and 3 purge ports to introduce cleaning media that would remove any residual resin that adhered to the valve internals.

APPL 0805-18