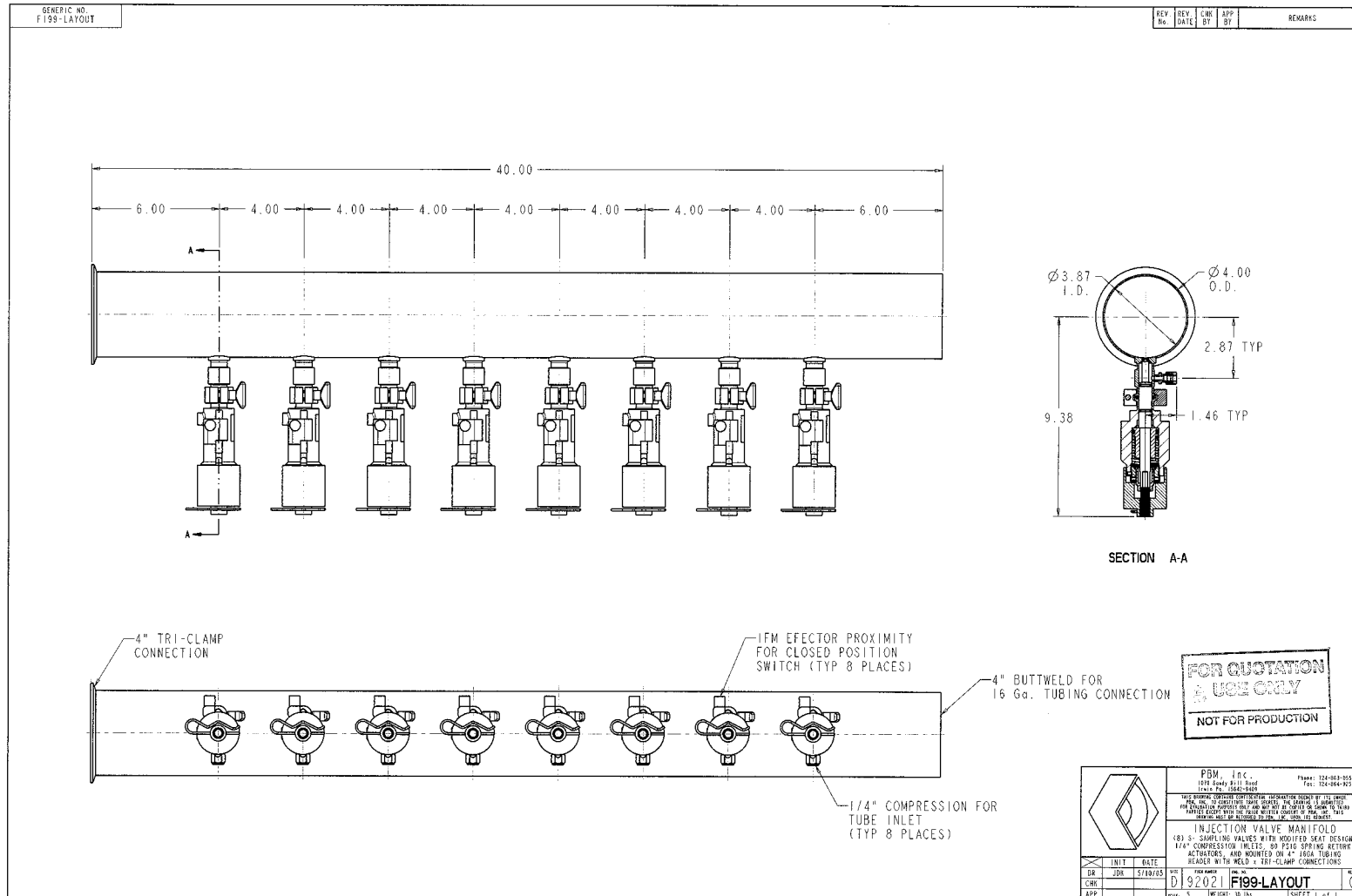


**Industry: Consumer Products**

**Product:** Fabflex® manifold with rising stem injector valves

**Media:** Fabric softener dye



**Application Brief:** A mid-west consumer products manufacturer required 8 automated sanitary valves to inject a controlled amount (0.1 Cv max) of dye into a 4 inch size main header containing liquid fabric softener. Each rising stem valve features a single acting actuator and a proximity switch to indicate valve "open" or "closed". PBM's fabflex® assembly also allows the flexibility of adding additional valves to the manifold as future needs arise.

APPL 0805-3