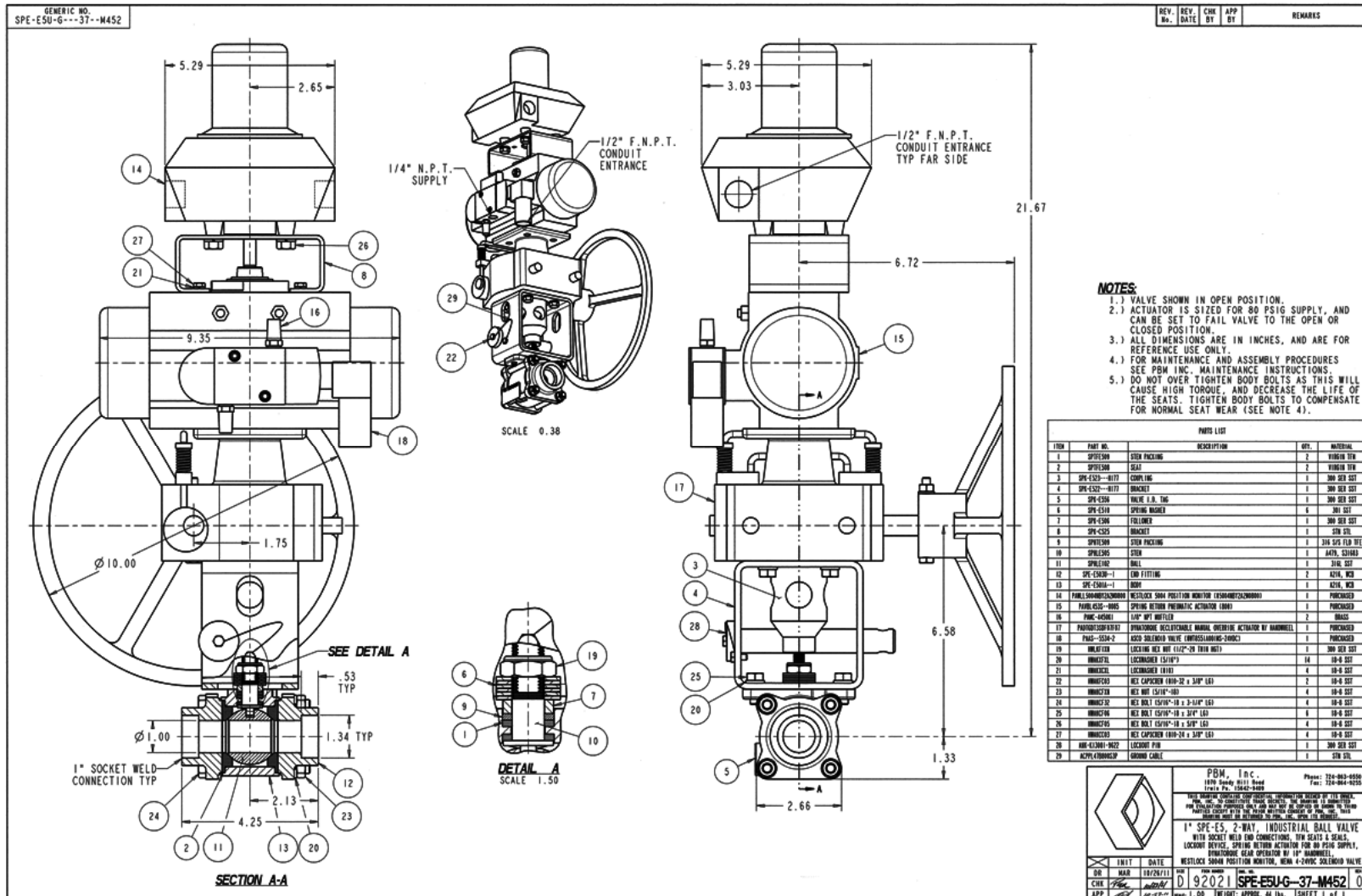


Industry: Pharmaceutical  
 Product: 2-way Ball Valve  
 End use: USP purified water sub-loops



**Application Brief:** A pharmaceutical giant used PBM 2-Way Industrial valves with 5004 proximity switch, actuator lock-out pin and manual over-ride for 80 psig supply. The use is in USP purified water sub-loops (maintenance pharmaceuticals).

APPL 0111-66