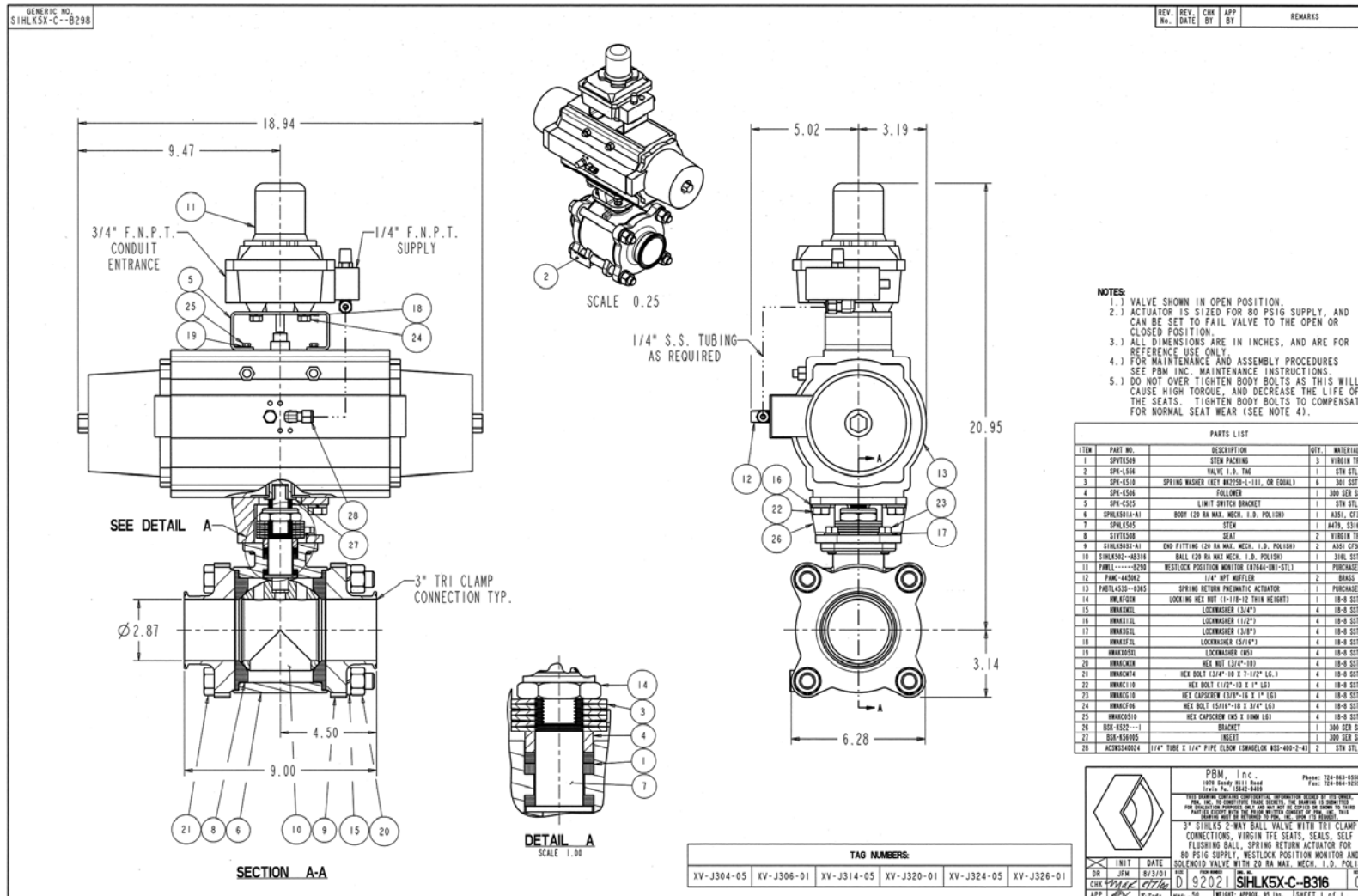


Industry: Consumer Products
 Product: 2-Way Self Flushing valves
 Media: Shampoo



Application Brief: A major producer of home and personal care products was having a problem getting enough flow through a diaphragm and pinch valves. PBM's Self Cleaning valves provided full unobstructed flow resulting in no shampoo being trapped in the valve cavity. PBM self-cleaning balls join the cavity of the valve with the piping when the valve is open. The holes allow product to fill the cavity just as it fills the piping. When flushing the lines, the cleaning fluid fills the cavity and displaces the product. The valves remain double seated and seal in either direction when closed.

APPL 1211-78