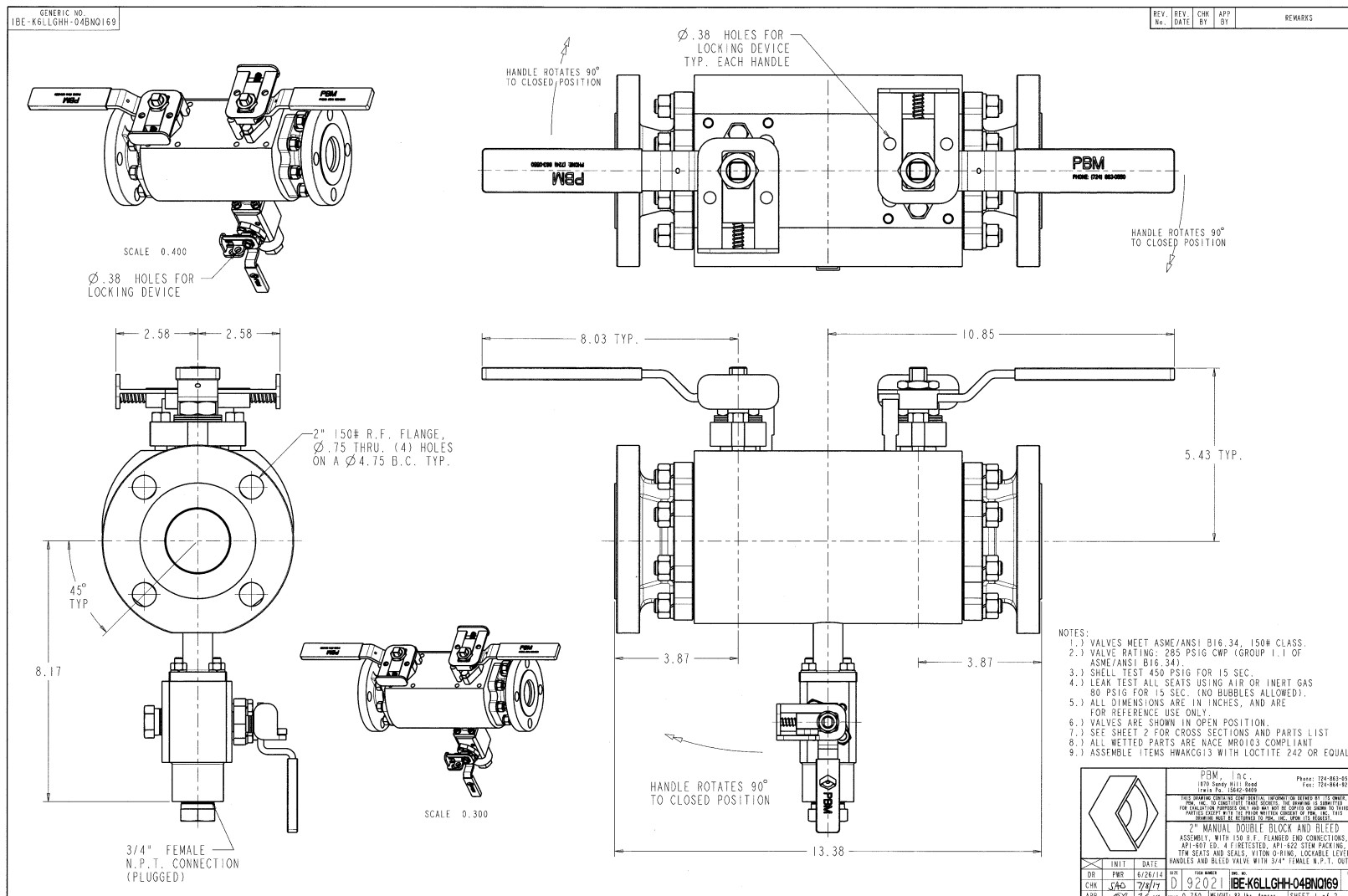


Industry: Refining
Product: DBB-IB, Carbon Steel/NACE Trim 2", CLISO
End Use: Sour Water



www.pbmvalve.com



Application Brief: A major oil refinery needed to convert a site level gauge on a vessel to a magnetic level gauge and two remote transmitters. The isolation requirement was for a double positive isolation arrangement. The PBM solution provided a fire tested, double positive isolation valve that fit their space requirements and met all their safety, reliability, emissions and operating requirements.

APPL 1214-107