

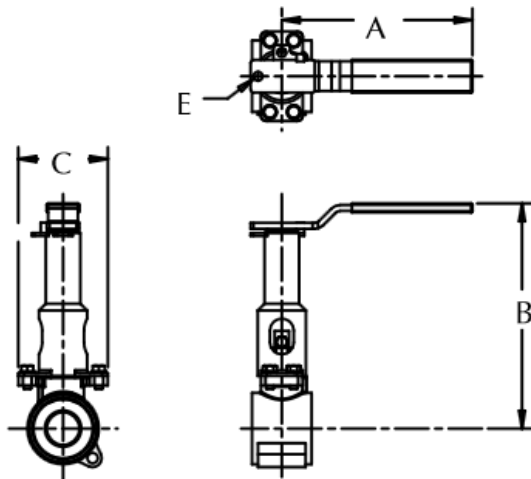


PBM, INC. • 1070 Sandy Hill Road • Irwin, PA 15642-9409 • 724.863.0550 • FAX: 724.864.9255
 www.pbmvalve.com • info@pbmvalve.com

www.PBMValve.com

Igenix® Cast Series 9 or Forged Series 8 Extended Locking Lever Handle Extended Locking Lever Handle

Valve Size			A		B - 2"		C		B - 4"		E	
US	DN ID	ISO	inches	mm	inches	mm	inches	mm	inches	mm	inches	mm
1/2"	8, 10	8	5.09	129	4.00	102	2.50	64	6.00	152	0.31	8
3/4"	-	10	5.09	129	4.14	105	2.50	64	6.14	156	0.31	8
1"	15,20	15	5.09	129	5.44	138	3.50	89	7.44	189	0.31	8
1-1/2"	25,32,40	20,25,32	8.00	203	7.46	189	3.75	95	9.46	240	0.38	10
2"	50	40	8.00	203	7.74	197	4.30	109	9.74	247	0.38	10
2-1/2"	-	-	12.10	307	9.36	238	5.58	142	11.36	289	0.38	10
3"	-	-	12.40	315	9.61	244	5.58	142	11.61	295	0.38	10
4"	-	-	12.40	315	10.38	264	7.33	186	12.38	314	0.38	10



Note: 2" extension standard on 1/2" - 2". 4" extension standard on 2-1/2" - 4".

Manual Valves with Tubing Ends (inches)				
Valve Size	Tube OD	Insulation max with no extension	Insulation max with 2" extension	Insulation max with 4" extension
1/2"	0.500	0.76	2.68	4.68
3/4"	0.750	0.79	2.72	4.72
1"	1.000	1.45	3.88	5.88
1-1/2"	1.500	3.10	5.57	7.57
2"	2.000	2.31	5.60	7.60
2-1/2"	2.500	4.00	6.88	8.88
3"	3.000	4.08	6.88	8.88
4"	4.000	4.35	7.12	9.12

Maximum insulation dimensions shown allow for 3/4" of clearance between outside of insulation and bottom of handle.

